



fibreC cladding panels

fibreC Cladding

The following pages will help select your fibreC cladding: from choosing the material up to applying and maintaining the facade.

This brochure will provide information on...

- Product details
- Information on **glassfibre reinforced concrete**
- **Design options** with fibreC
- **Areas of application**
- **Structural requirements**
- **Fastening details**
- **Handling** and fastening the cladding panels **onsite**
- **Quotation and ordering** phase
- **Handling fibreC panels** (from transport to application)
- **Cleaning** fibreC panels
- The **contact person** to answer your questions

We look forward to your feedback and ideas! **We listen!**

Note

This brochure contains basic descriptions and information on fibreC glassfibre reinforced concrete panels.

The descriptions of the product characteristics should not be considered as a guarantee. All information, including technical information and drawings, is up to date and based on our own experience. The service provided by Rieder Smart Elements GmbH extends to fibreC panels but explicitly not to fastening materials or substructures. The applications described here are examples only and do not take account of the specific conditions associated with individual cases. The information and suitability of the material for the intended use must be checked with respect to each individual country and project. Despite careful checking, we cannot accept liability for

accuracy, completeness or actuality. This applies, in particular, to print errors and subsequent changes to technical information. Reference to this will be made in the contract to the agreement to be concluded, which takes precedence over information provided here.

Please get in touch with your local fibreC sales partner or contact Rieder directly for more information on sales terms, availability and prices, etc. The latest version of these technical documents is available for download under www.rieder.cc.

06/2012

Material

fibreC Product Description	13
Sustainability	15
Technical Specifications	19
Standards & Approvals	20
Colours & Surfaces	23
Characteristics of fibreC	25
fibreC Design+	27

Cladding System

Ventilated Rainscreen Cladding.....	32
Corner Solutions.....	34
Joints.....	35
Fitting Direction	35

Types of Fastening

Overview of Fastening Types.....	38
Undercut.....	40
Rivets.....	46
Adhesive.....	52

Processing

Cutting.....	58
Drilling.....	59
Rivets	59

Quotation and Order

From Enquiry to Delivery.....	62
-------------------------------	----

Handling & Service

Loading and Securing for Transport.....	66
Storage.....	66
Proper Handling.....	67
Cleaning.....	68
Repair Kit	69
Customer Service.....	70
Contact Details.....	74



UNM Cancer Center | New Mexico
RMKM Architects | Albuquerque
5,850 m² fibreC 13 mm | terracotta | FE, FL & MA

QR -Codes



QR codes (quick-response codes) are barcodes that connect printed products to the internet. These digital codes are visible on each area where printed content is also available in digital form or where we supply supplementary information on our website.

Using your smart phone as a barcode scanner



You can upload or forward images, technical drawings and contact information with just a single click on your mobile phone.

You must have a so-called QR reader installed on your mobile phone if you want to scan QR codes and establish an automatic link to the digital content on the internet. Newer mobile phones often have these readers pre-installed. If you don't have a reader already installed, you can download one from here:

Browse to www.i-nigma.mobi on your smart phone. Activate the link, download the software and grant all permission.

or

text "i-nigma" to: +44 7797 882325

You will then receive a link that you can open in the mobile phone web browser. Your mobile phone will be automatically recognised. Click to confirm and download the i-nigma QR reader..

You will need to start the i-nigma programme to scan the QR code using your mobile phone. Depending on your mobile device, the software will either be downloaded to your "Downloads" or "Downloaded" folder or will appear directly with your other apps. Please contact your mobile phone manufacturer if you have any problems.

Your mobile phone camera will be activated automatically as soon as you open the programme. Simply take a photo of the QR code and additional information for the respective brochure page will appear. You can download the technical details to your mobile phone and forward the information.

Support website in the Internet: www.i-nigma.com

fibreC Download-Center

Anywhere where you see this icon, the information displayed, or additional information, is available for download from our online fibreC download centre: www.rieder.cc/download

Your feedback is important to us!

We continually strive to improve our products and all processes associated with development, manufacturing and processing.

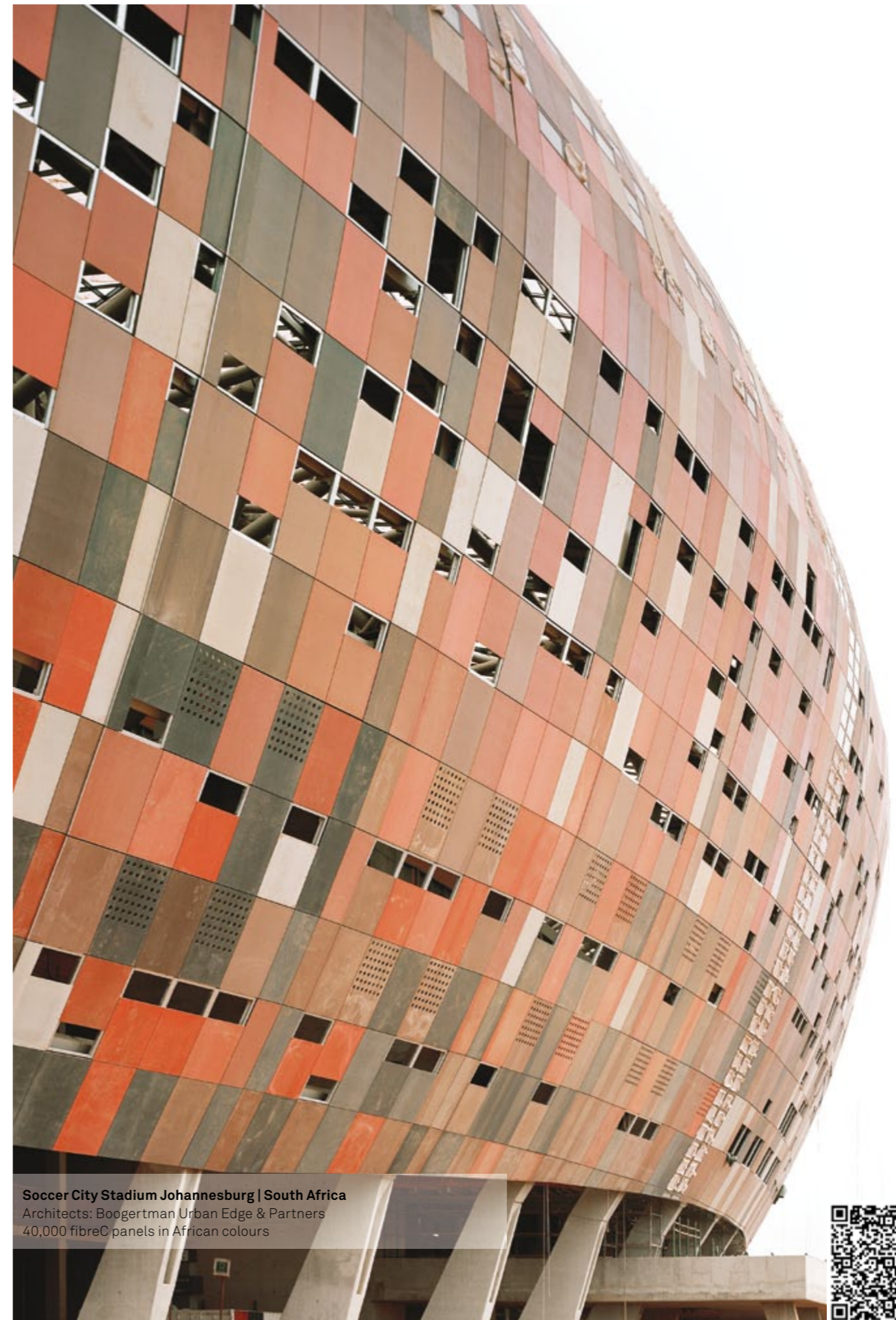
This aim of the brochure is to provide a user-friendly guide to fibreC glassfibre cladding, its areas of application and application options. So please let us know how it works and share your experience with us! This will help us improve our product, range and installation instructions.

We listen!

t: +43 / (0)6542 / 690 150 or
m: marketing@rieder.cc

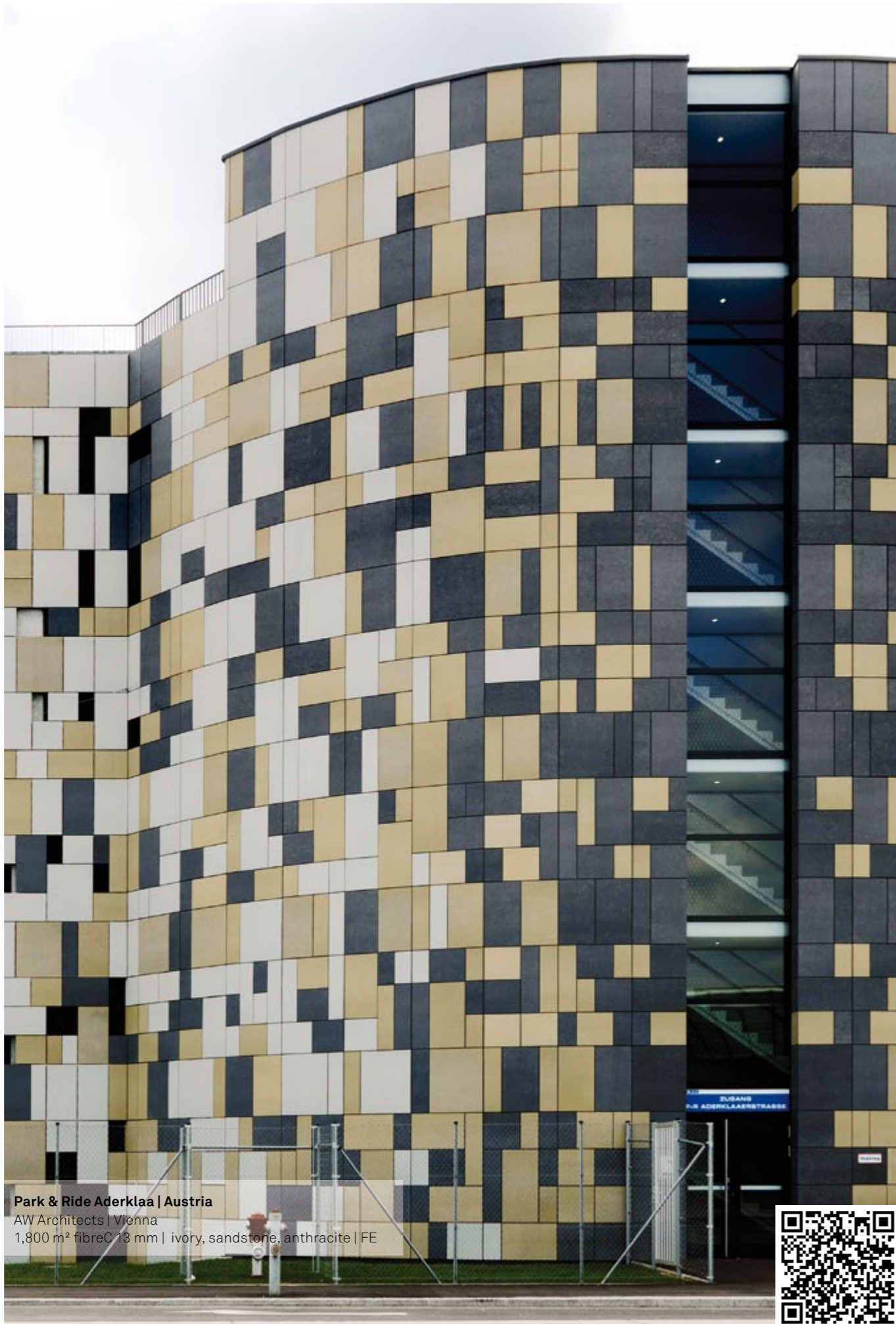


Contact Marketing



Soccer City Stadium Johannesburg | South Africa
Architects: Boogertman Urban Edge & Partners
40,000 fibreC panels in African colours





Park & Ride Aderklaa | Austria
 AW Architects | Vienna
 1,800 m² fibreC 13 mm | ivory, sandstone, anthracite | FE



Material

fibreC Product Description	13
Sustainability	15
Technical Specifications	19
Standards & Approvals	20
Colours & Surfaces	23
Characteristics of fibreC	25
fibreC Design+	27



Shopping Centre Orchimont | Luxembourg
1,800 m² fibreC 13 mm | anthracite, terracotta | MA & FE

fibreC - Revolution in Concrete

fibreC is a glassfibre reinforced concrete material that unites the advantages of both glassfibres and concrete. Behind the development of fibreC lies the vision of creating a light and stable concrete cladding panel that withstands the effects of weather and environmental conditions, while combining durability and valuable design.

Glassfibre reinforced concrete: slender and strong

Concrete is made from natural materials and has been used by people for many years. The first experiments with glassfibre reinforced concrete were made more than three decades ago. Wolfgang Rieder took stock of the results of these experiments and pushed on with the development of the material. Using top-class technology, the Rieder group made glassfibre reinforced concrete suitable for new areas of application. The characteristics of fibreC, its quality, wide range of design options and durability offer new, original and cutting-edge ways of using concrete that were unimaginable just a short time ago.

Glassfibre reinforced concrete as a building material

The classic material concrete exhibits good compressive strength, but is also brittle and has a low tensile strength. This disadvantage is overcome with the production of a composite material consisting of concrete and a tension-resistant layer. Glassfibre reinforced concrete is made from cement-bonded fine concrete reinforced with alkali-resistant glassfibres. Unlike steel fibres, glassfibres provide a distinct advantage in that they do not require anti-corrosion treat-

ment. A concrete cover for concrete components with metallic reinforcements is no longer required. This means concrete elements can be thin, slender and light. The use of mineral raw materials, natural stone components and glassfibre reinforcements guarantees quality that meets the highest requirements. The wide range of applications for fibreC nurtures the joy of creative experimentation.

A safe material

90% of fibreC glassfibre reinforced concrete consists of sand and cement; the remaining 10% is made of glassfibres, pigments and concrete additives. This makes the panels robust and extremely durable. fibreC withstands enormous pressure with a minimum thickness and extremely large panel size. The material guarantees absolute safety thanks to its excellent thermal values, offering temperature stability of up to 350° C. fibreC glassfibre reinforced concrete is not flammable.

Facade Applications:

- . Ventilated rainscreen cladding exterior wall
- . Infillings post and beam constructions
- . Overlapping cladding
- . Exterior cladding for composite elements
- . Moulded coverings
- . Cladding for window embrasures
- . Cladding for window frames and door frames
- . Verge and eave terminations
- . Roof soffits
- . Balcony panelling
- . Portal constructions
- . Skirting board cladding

Standard constructions for ventilated fibreC facades:

- . Concealed fastening with undercut anchor (p. 40)
- . Visible fastening with rivets (p. 46)
- . Concealed fastening with adhesive (p. 52)

Product Description fibreC

fibreC - a revolutionary material



Absolute fire protection – without any special coating

The excellent thermal values (fire protection classification A1 as per DIN - incombustible - and temperature stability up to 350° C) make fibreC a particularly robust material that requires no additional treatments or chemical coatings for fire protection.



Performance – hail-proof & weather-resistant

fibreC is non-combustible, can withstand heavy loads and is durable. The glassfibre reinforced concrete panels have high mechanical stability, are dimensionally stable, weather-proof and thus hail-proof.



Individual look

Extraordinary design variants (colours, surfaces, print, perforation, sand-blasting, relief, shapes) meet the creative requirements of modern architecture. fibreC means Designers and Planners can work with no limits.



Authentic: concrete – nothing more and nothing less

fibreC is glassfibre reinforced concrete material. The glassfibre reinforcement and the use of mineral raw materials give fibreC the highest quality – while at the same time remaining an authentic material.



Industrial Manufacture

The concept of "industrial manufacture" means that apparent opposites such as batch production of manufacturing with the industrial specifications of our time, and producing with ever greater economic efficiency, can be combined. This unique combination guarantees flexibility and spontaneity in the production of fibreC.



Benefits of a ventilated cladding system

The ventilated rainscreen cladding system creates balanced room air conditions, protects against heavy rain and offers both condensation and sound insulation. Alongside the structural-physical advantages, rainscreen cladding also features economic benefits: controllable manufacturing costs, weather-resistant assembly, long life and no maintenance.



Ductility

Bending, shaping and turning of elements in one piece open up new possibilities for design with concrete. Machined parts are tailor made as a single piece without mitre cuts and still manufactured economically.



Long-term stability

The technical characteristics of fibreC remain unchanged over an expected lifetime of over 50 years. The natural signs of life and the gradual influence to the appearance caused by the environment do not affect either the mechanical load capacity or the safety of the panels.



Winner of many awards

Various international awards and certifications from the MIPIM AR Future Project Award in Cannes in France through the Form & Function Award in Australia to the nomination for the design prize of the Federal Republic of Germany are testimony to the quality and innovation of fibreC.



Railway Station Vienna North | Austria

Architect: Albert Wimmer | Vienna

1,800 m² fibreC 13 mm | anthracite & liquide black | FL & MA

fibreC Sustainability

Holistic approach

Our principle of sustainability and our responsibility towards the environment are backed by the international environmental management certificate ISO 14001. We set ourselves high standards in the protection of the environment and use innovative technologies with ecological responsibility. fibreC, unlike most of the products available on the market, is based on mineral base materials and it is fully recyclable. Profitability and sustainability are promoted by the economical use of resources.

The variety and efficiency achieved with fibreC facilitate high-quality, visually attractive, lasting and cost-effective constructions. This shows how the authentic material fibreC meets the current trend for natural, environmentally-friendly and sustainable, value for money materials, creating an aesthetic and modern effect.

- Environmental management certificate **ISO 14001**
- **IBO - Certificate** from the IBO Institute in Vienna
- Listed in the **GreenSpec® Product list** / Leed Points
- Use of **exclusively high-quality raw materials**
- From **mineral components**
- Can be **100 % recycled**
- **Long-term stability**
- **Low maintenance** costs
- 90 % thinner than similar concrete panels
- Food safe & **safe from a health point of view**

Food safe und no danger to health

The well-tried use of fibreC panels in professional bread and pizza ovens and the associated strict tests and food and certificates give the ecological material fibreC an excellent health certificate. Glass-fibre reinforced concrete is ecologically sound and thus completely safe from a health point of view. The fibreC baking surface has all the tests and certificates relating to food safety and security.



Concrete has never been so green!



Frank Stronach Institute | Austria
Zinterl Architects ZT | Graz
1,800 m² fibreC 13 mm | venice green | FL & MA



A Look at the Green Facts

fibreC close to nature



100 % recyclable

fibreC is based on mineral base materials and is thus fully recyclable. Profitability and sustainability are promoted by the economical use of resources.



ISO 14001

We set ourselves high standards in environmental protection. Environmental management at Rieder is certified according DIN EN ISO 14001:2009.



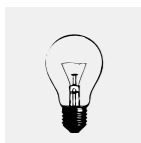
IBO Certification

The production of fibreC has 49% less greenhouse potential than fiber cement panels and aluminium sheeting. With its excellent Eco profile, fibreC consumes 78% less primary energy than high pressure laminate panels (Source: IBO product test 09/2007).



GreenSpec & Green building

fibreC is part of the product list GreenSpec®. GreenSpec offers useful information on energy-saving construction and lists products that meet strict biological and ecological criteria for buildings.



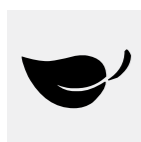
Carbon Footprint

The primary energy requirement for the production process of fibreC glassfibre reinforced concrete is only 202 MJ/m² (Pel). The manufacture causes 14.0 kg CO₂eq/m² greenhouse potential and 0.04 kgSO₂eq/m² acidification potential (AP).



VOC-free & food safe

fibreC is free of pollutant emissions and thus absolutely safe for human health. Declaration of no-objection/ Food safety No. 28766 U 09.



Vision

The nature and the eco-friendliness of fibreC are of particular concern to us. We work round the clock to become even better and more eco-friendly despite the excellent life cycle assessment.

Life Cycle Assessment

Objective sustainability

The methodology of the life cycle assessment was developed to achieve an objective evaluation. It is regulated in the Norm DIN EN ISO 14040 and has been used for this study. As a result, the ecological choice of building materials can be based on scientific findings.

All material and energy contributions of the individual processes of manufacture and use of a cladding panel have been balanced in the process. These include the production of resources, the energy supply, the manufacture of the products required, the provision of the infrastructure, transport services and the use and disposal of the particular products. As part of the impact assessment, the emissions in air, water and soil were calculated and summarised them using equivalence factors into the following 3 impact categories (O13 Index):

- Primary energy content not renewable (Pel ne)
- Global warming (GwP)
- Acidification (AP)

Primary energy content not renewable (Pel ne)

The "Primary energy content not renewable" is calculated from the upper calorific value of all those non-renewable energy resources, used in the manufacturing chain of the product.

Global warming (GwP)

The greenhouse potential GWP (Global Warming Potential) describes the contribution of a substance to the green house effect relative to the contribution of a similar amount of carbon dioxide.

Acidification (AP)

Acidification is caused mainly by the interaction of nitrogen oxide (NO_x) and Sulphur dioxide gases (SO₂) with other components in the air. The Acidification Potential (AP) is a measure of the tendency of a component to become acidified.

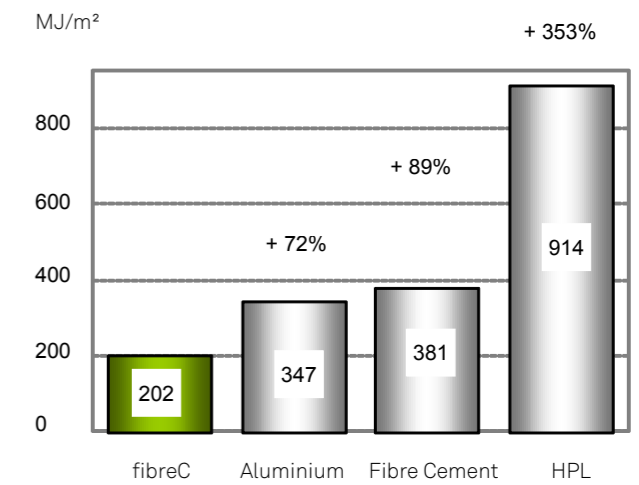
Source: www.ibo.at

IBO Test certificate for ecologically recommendable product

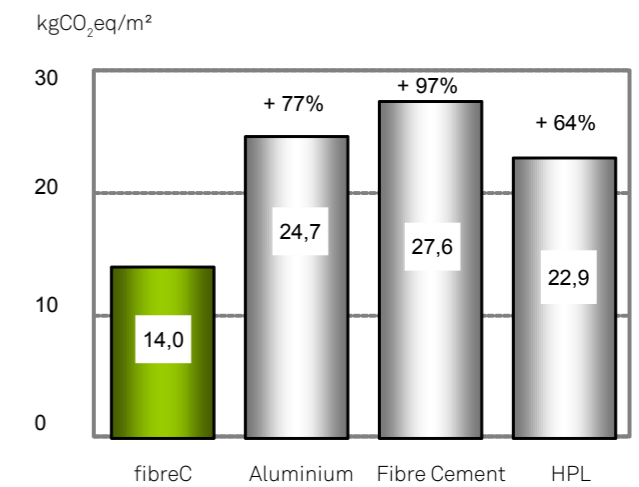
Comparisons show that the production of fibreC, unlike other cladding materials, is completed in a very ecologically sound manner. The manufacture of fibreC has 49% less greenhouse potential than in fiber cement panels and aluminium sheeting. With its excellent eco profile, fibreC consumes 78% less primary energy than high pressure laminates.

The IBO test certificate is regarded as a recognised and independent test seal, issued only to selected products that meet strict environmentally compatible and ecological criteria. It facilitates transparency and represents a reliable aid to decision-making for ecologically recommendable products. (Source: IBO Product test 06/2009).

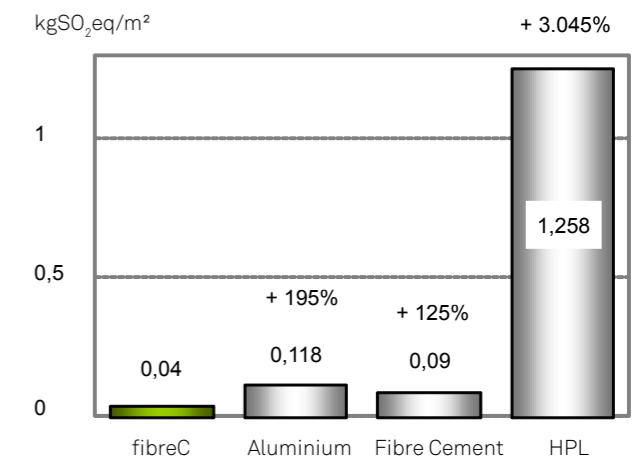
Primary Energy (Pel ne)



Global Warming (GwP)

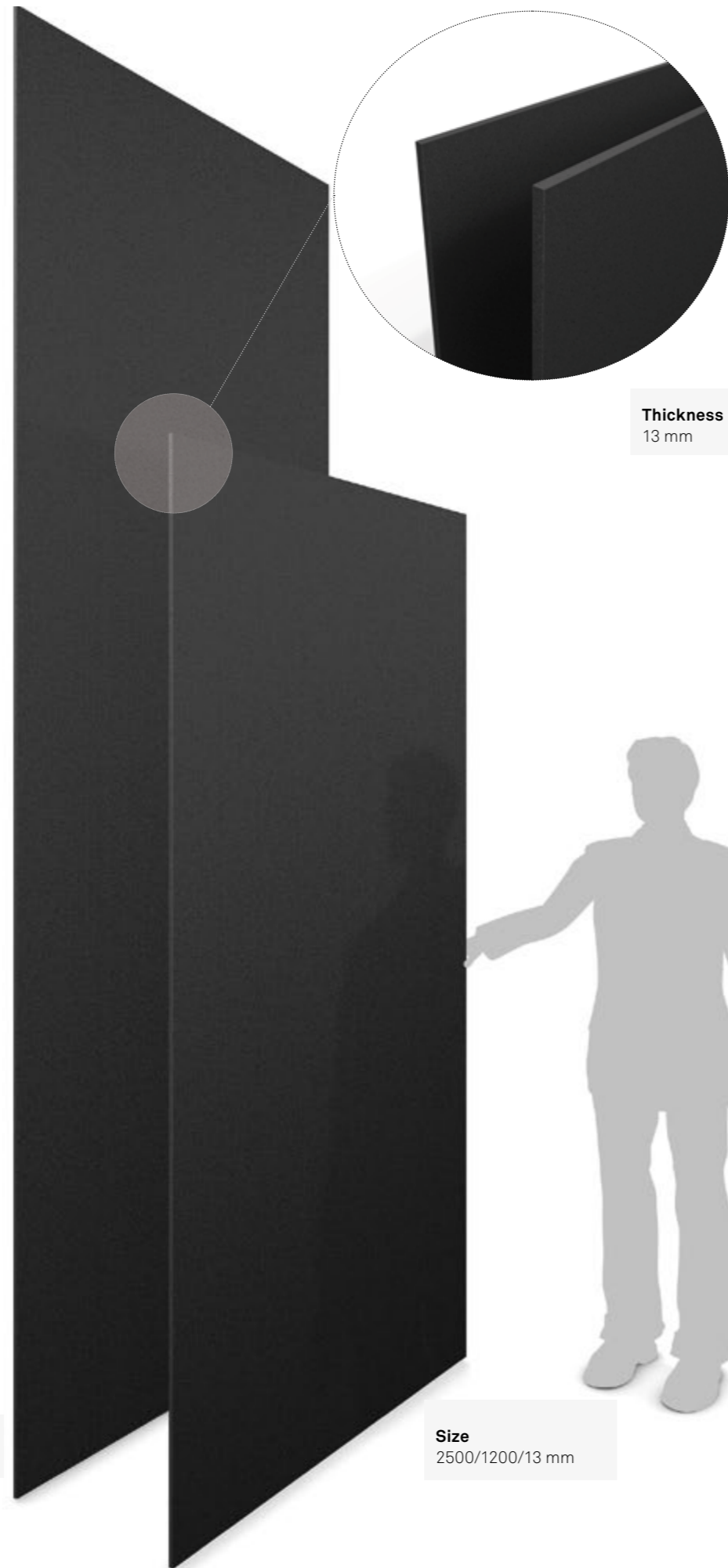


Acidification (AP)



Technical Specifications*

Download



Thickness
13 mm

Size
3600/1200/13 mm

Size
2500/1200/13 mm

Technical Datasheet



	fibreC 13 mm	Standard
Size	2500/1200 mm and 3600/1200 mm on request	
Special sizes		
Dimensional variation length (3.6 m)	± 3 mm	EN 12467
Dimensional variation width (1.2 m)	± 2 mm	EN 12467
Diagonal difference up to over 1.5 m	± 3,5 mm ± 4 mm	DIN 18202
Diagonal difference over 2.5 m 3.6 m	± 5 mm ± 6 mm	DIN 18202
Thickness	13 mm	
Thickness tolerance	± 1.3 mm	EN 12467
Edge straightness (Level 1)	± 0,05 %	EN 12467
Perpendicularity (Level 1)	± 2 mm/m	EN 12467
Physical characteristics		
Tolerances facing up to 0.6 1.2 m	± 2 mm ± 4 mm	DIN 18202
Tolerances facing up to 3.6 m	± 8 mm	DIN 18202
Swelling	0.384 mm/m	
Shrinkage	0.737 mm/m	
Bulk density	2.0 - 2.42 kg/dm ³	
Bending tensile strength	> 18.5 N/mm ² (MOR)	EN 12467, Category 4
Elastic modulus	approx. 10.000 N/mm ²	
Dead load / Mass per unit area (13 mm)	26 - 31.5 kg/m ²	
Thermal expansion coefficient	10*10 ⁻⁶ 1/°k	DIN 51045
Building material class	A1 - incombustible	DIN 4102 EN 13501
Temperature stability	according to humidity up to 350°	
Specific heat capacity	approx. 1000 Joule / (kg * K)	
Conductivity	lambda: ca. 2.0 W / (m * K) U: 1/lambda ca. 0.5 m * K/W	
Weather-resistance		
Water impermeability	given	EN 12467
Heat-rain-alternate test	given	EN 12467
Frost resistance	given	EN 12467
Frost-defrost-alternate test	given	EN 12467
UV-light resistance	light- & UV-resistant colour pigments	DIN 12878
Hot water resistance	given	EN 12467
Wet storage resistance	given	EN 12467
Fastening visible	rivets	
Fastening not visible	adhesive, undercut anchor	
Substructure	aluminium, steel	
Joint width	min. 8 mm	

Reinforcement Edge formation

With alkali-resistant glassfibres in the matrix (Cem-FIL, Approval Z-3.72-1731)
Cut edges are unfinished and sharp-edged with a coarseness of about 1 mm on the visible face.
Glassfibres may emerge at the edges
** MOR: Modus of Rupture; Design values deviate from MOR in accordance with national rules and regulations. National approvals, rules and regulations apply to the calculation of the rated resistance.

Colours

Polar White	Sahara
Ivory	Sandstone
Silvergrey	Terra
Anthracite	Terracotta
Liquide Black	Venice Green

Special colours min. project size 1000 m².

Surfaces

MA brushed / smooth surface, natural blushing effect
FE sandblasted: blasted at higher pressure, surface is rougher
FL sandblasted: blasted at lower pressure, surface is finer than FE

Assembling and Weather Protection

Hydrophobicity

Colour, Design & Surface

Because concrete is a natural product, each glassfibre reinforced concrete panel is regarded as a single piece. Minor differences in colour, structure and texture are characteristic. Efflorescences or small, visible pores are not defects. The light resistance varies depending on the colour. Differences in the surface appearance, which do not affect the fitness for purpose of the panels, are permitted. EN 12467 / Data sheet Exposed concrete 02/2004 [Publisher.:BDZ/DBV]

* Subject to the particular quotation documentation.

The information contained in this document and the technical description of product characteristics and the technical instructions for their use should not be interpreted as a contractual commitment on the part of the manufacturers. Despite careful inspection, no liability can be accepted for the correctness, completeness and topicality of the document. This is particularly true for typographical errors or subsequent changes to technical specifications.

Norms & Approvals

Quality

The Rieder group is certified according to ISO 9001 and ISO 14001. Our large number of patents, tests and certificates underlines the enormous power of innovation and technological progress of our company, and it shows the safety and reliability of our products. All products undergo multi-stage tests under international standards to guarantee consistent high quality.

All fibreC products are awarded the CE mark under independent, stringent tests.

fibreC fulfils the requirements of the standard EN 12467 and has the following product and building system approvals:

- Approval of the DIBT (Germany)
- Avis Technique of the CSTB (France)
- Certification under GOST (Russia)
- European Technical Approval (Keil undercut with fibreC)
- General Technical Approval Z-10.8-408 (adhesive fastening)

All current tests, certificates and approvals can be provided on request.

Extract from the fibreC approvals & tests

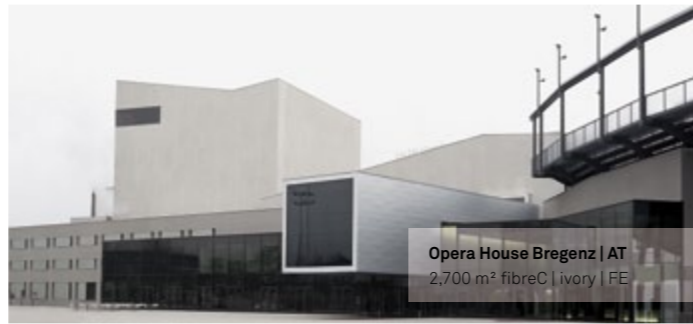
Category	Country	Description
System Approval	EU	EU European Technical Approval: Keil undercut anchor for glassfibre reinforced concrete panel fibreC I ETA-06/0220
System Approval	DE	General Technical Approval Z-10.8-408 I Sika Tack Panel Bonding system to the fastening of fibreC Glass fibre reinforced concrete panels on aluminium substructure
Product Approval	DE	General Technical Approval DIBT Z-31.4-166 (Glass fibre reinforced concrete panel fibreC)
Product Approval	RU	GOST Report Number: KT-03-2010
Product Approval	FR	Avis Technique of the CSTB, No. 2010332
Product Approval	US	General technical material test ASTM 1185
CE Mark	DE	EG Declaration of conformity as per DIN EN 12467 I CE 08
Emission Permit	EU	Certificate IBO Vienna
ISO Standardisation: Quality	EU	DIN EN ISO 9001:2008
ISO Standardisation: Environmental management	EU	DIN EN ISO 14001:2009
Declaration of no-objection	EU	EU Food safety as per EN 1186, EN 13130, CEN/TS 14234
Technical Test on fire behaviour	DE	Classification of the fire behaviour as per DIN 4102, class A1, incombustible
Technical Test on fire behaviour	DE	Classification of the fire behaviour A1 as per DIN EN 13501-1
Technical Test on fire behaviour	AT	Test of the fire behaviour under ÖNORM B 3800-5
Technical Test on fire behaviour	US	Non-combustible as per ASTM E 136 & ASTM E 84
Technical Test on fire behaviour	CA	Non-combustible as per CAN/ULC-S114
Technical Test Ball throw test	DE	Ball throw-safe as per DIN 18032-3:1997-04
Technical Test Long life	AT	Durability study as part of the ETA 06-0220
Technical Test Weathering	EU	Frost-thaw salt resistance on the basis of CDF-procedures
Technical Test Weathering	AT	Heat-Rain-Alternate test as per EN 12467
Technical Test Weathering	AT	AT Hail test (Hard Body Impact Test) as per DIN 18516, DIN EN 13583, ASTM E 822, EOTA TR 001
Technical Test Weathering	UK	Weather resistance test (Water, Wind, Impact)
Technical Test Weathering	US	Wind load test ASTM E 330
Technical Test Weathering	US	Weather resistance test ASTM 1186
Technical Tests Earthquake	EU	Earthquake resistance in connection with the Sika Tack Panel Bonding system



Villa P Meran | Italy
 S.O.F.A Architects | Vienna
 600 m² fibreC 13 mm | bianco | MA



Sparkasse Diedorf | DE
420 m² fibreC | bianco | FL



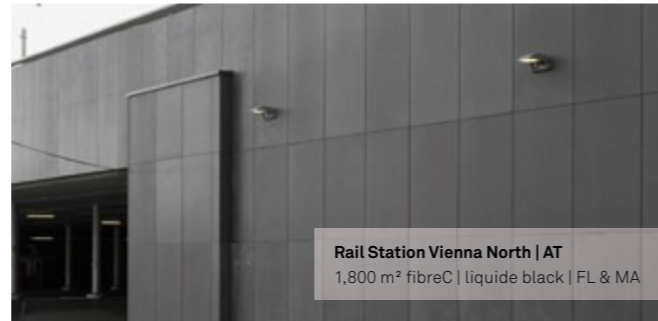
Opera House Bregenz | AT
2,700 m² fibreC | ivory | FE



Storefront Gallery New York | US
fibreC | silvergrey | MA



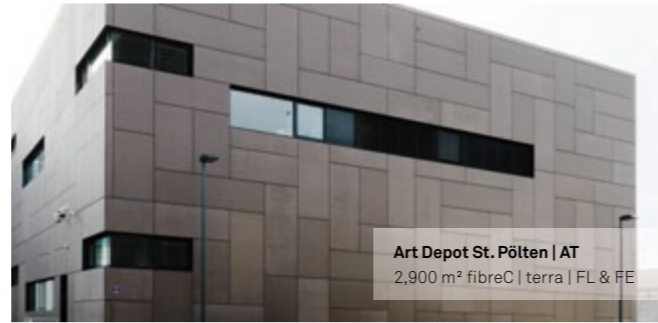
Red Bull Media House | AT
1,100 m² fibreC | anthracite | FE



Rail Station Vienna North | AT
1,800 m² fibreC | liquide black | FL & MA



Villa Ried | AT
700 m² fibreC | sandstone | FE



Art Depot St. Pölten | AT
2,900 m² fibreC | terra | FL & FE

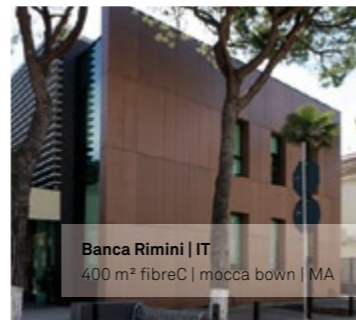


UNM Cancer Center | US
6,000 m² fibreC | terracotta | various surfaces

fibreC Projects



Frank Stronach Institute | AT
1,850 m² fibreC | venice green | FE & FL & MA



Banca Rimini | IT
400 m² fibreC | mocca bown | MA

Colours & Surfaces

10 standard colours - 3 surfaces

fibreC offers a wide range of design options for facades. The selection of ten different colours in each of three surfaces offers a wide range of designs to meet individual expectations. Special colours (RAL - equivalent) can also be produced on request. The three surface finishes (sand blasted, finely sandblasted or brushed) open up a wide spectrum of optical and tactile effects. The combination of different surfaces in the same colour creates a particularly vivid design.

Natural colours

fibreC has a distinct advantage over other colour-treated materials - namely the consistent colouring of the whole panel. The mixture of the desired colour is created before the actual production process. The colour becomes part of the product by being added in the blending of the raw materials. Other products are in some cases only superficially treated and coloured, resulting in significant quality differences.

fibreC is coloured by ferric oxide colours and natural additions and subsequently brushed or sandblasted. The natural, authentic colours of fibreC fit well in landscapes and blend with nature and the environment.

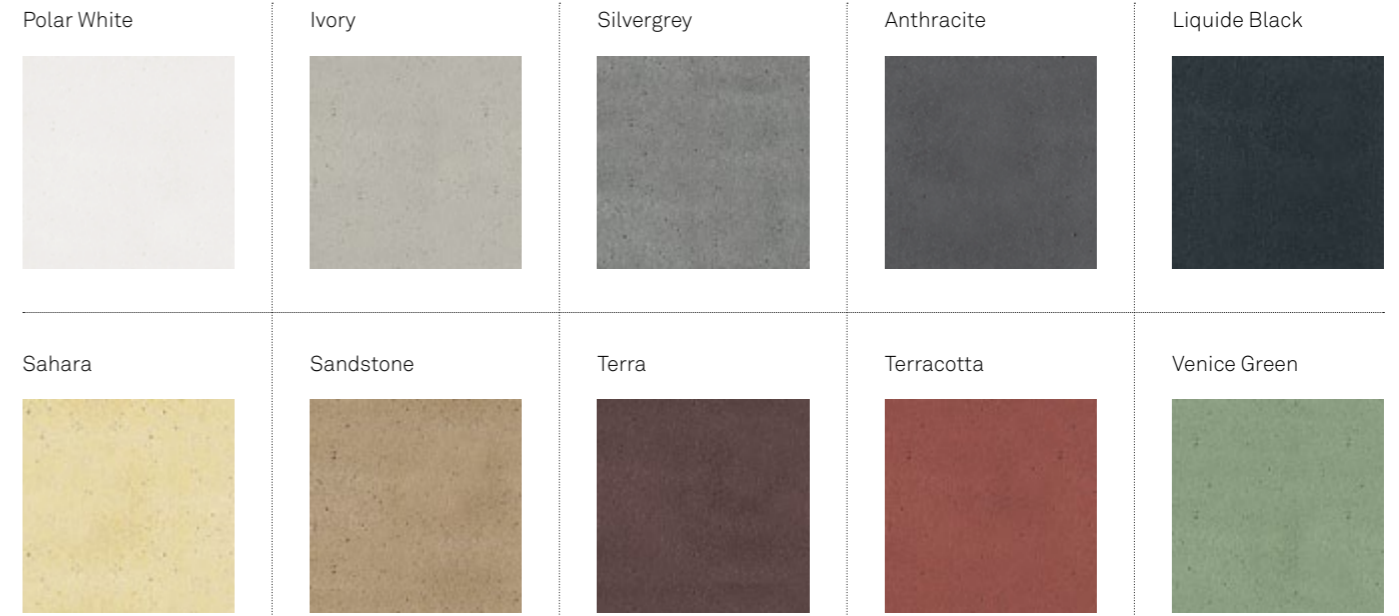
Colour fastness and UV stability

Liquid colours for colouring cement-bonded building materials comply with the DIN EN 12878. The pigments used in the liquid colours are light-, UV- and weather-resistant and not soluble in water, alkalis or diluted acids. Factors such as natural fluctuations in raw materials used, panel and air moisture, dirt and light sources must be taken into consideration. The appearance of the panels may even become brighter due to dehydration. Changes caused by age, weather or environment specific influences are natural processes that cannot be influenced from a production point of view and are therefore not considered material defects. The technical characteristics of the panel are not affected by these.

Colour differences

Glassfibre reinforced concrete is a natural material. The characteristics of the raw materials such as the colour of cement can lead to variations in colour within a panel, between individual panels or between different production batches. To avoid any discrepancies, we recommend ordering the total amount instead of part orders, and ordering spare panels with the first delivery.

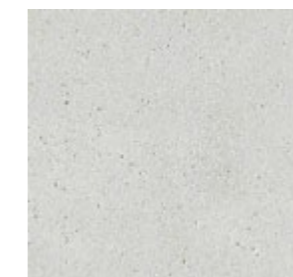
Due to technical reasons printed colours may differ from the original shade.



FE | Ferro
Sandblasted: blasted at higher pressure, surface is rougher



FL | Ferro Light
Sandblasted: blasted at lower pressure, surface is finer than FE



MA | Matt
Brushed: smooth surface, mottled appearance, natural blushing effect



Special Colours on request; orders from 1000 m²



Small air bubbles and porosity are possible: data sheet on exposed concrete 02/2004 (Publ.:BDZ/DBV)



Domicilium Linz | Austria
Architects: Riepl/Riepl | Linz
1,200 m² fibreC 13 mm | terra | MA

Characteristics of fibreC

Vivid signs of a natural building material

Concrete is a natural product and Rieder sees it as such, with all its vital signs and characteristics. Living surfaces with the interplay of colour shades and light cloud effects, rather than dead and clinical surfaces are characteristic of fibreC. Even in the colouring of the concrete matrix, the focus is placed on meeting the ecological requirements of modern design. This is why the production involves natural raw materials to ensure the authenticity of all products. The demand for low porosity, homogeneous colour and strictly uniform smooth surfaces is not part of our sustainable philosophy. We consciously avoid chemical treatment and artificial materials to preserve the authenticity of the „green“ product fibreC. Colour and texture variations are a feature of our natural product.

Concrete lives

As the panels are not chemically treated or painted, small defects, dents, tension lines, efflorescences or flaws and textures may be visible (Data sheet exposed concrete 02/2004 [Publ.:BDZ/DBV]).

When cement sets, it separates calcium hydroxide. This dissolves in water and can migrate to the concrete surface. When the water evaporates, the calcium hydroxide is returned to the surface and is converted to calcium carbonate (lime). If this natural process is intensified by unfavourable conditions, it leads to deposition of calcium carbonate, which is visible as a white efflorescence. Efflorescences are a natural feature of all cement-bonded composite materials.

Part of nature - resistant & stable

fibreC is not an artificially created material that exists cut off from the natural cycle of the environment. As adaptable and extraordinary the concrete skin is, it is just as authentic. fibreC is part of a natural cycle. Influencing variables for possible colour changes are temperature variations and differences in air humidity.

Concrete is hygroscopic. It absorbs moisture and gives it off again. The large format of the panels means that moist spots may dry at different speeds. Visible colour changes may occur between individual panels and within a panel. The visible characteristics of concrete are intensified on matt panel surfaces.

A typical feature of highly-compressed, high-quality concrete surfaces is so-called blue- and green discoloration, which can occur in particular in bright colours or fresh panels. They can be attributed to a natural hardening and drying process of organic substances. Tests and experiences have shown that this blue colouring on the cladding may disappear under the influence of UV and light. This occurs based on the climatic and environmental influences. Heat, insolation and dryness can in particular accelerate the process.

Hydrophobising

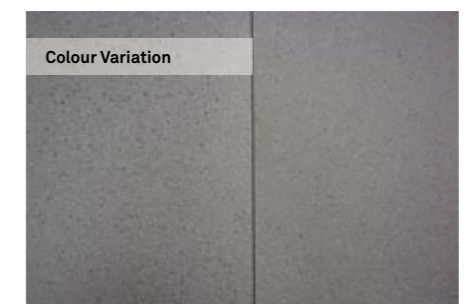
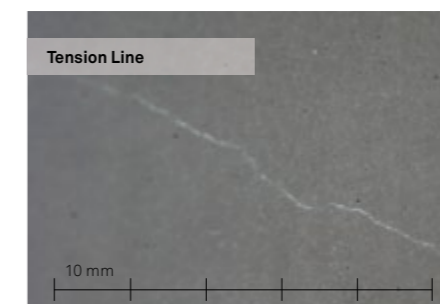
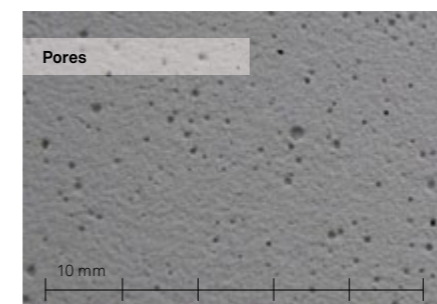
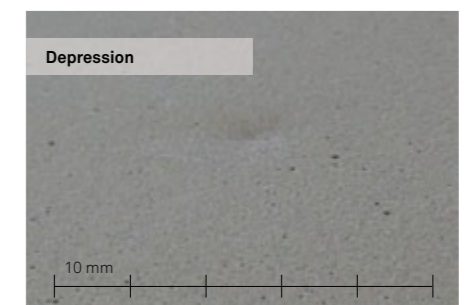
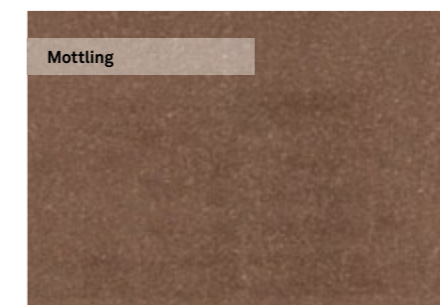
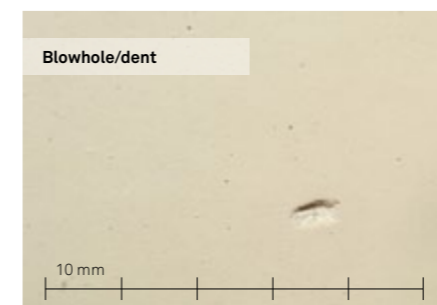
As a basic protection against environmental influences, fibreC comes with a transparent hydrophobic impregnation. The opaque hydrophobising emphasises the naturalness of the material. The gloss level of the hydrophobic impregnation has a visual influence on the surface appearance. The hydrophobising is permeable and therefore breathable. If the cladding panel is applied vertically, it provides solid basic protection against weathering, dust and dirt but not against scratching, pressurised liquids, oil, acids, strong alkaline substances, etc. The hydrophobising may be reapplied to achieve increased protection of the panels and to prevent extreme environmental conditions and wear and tear through intensive cleaning.

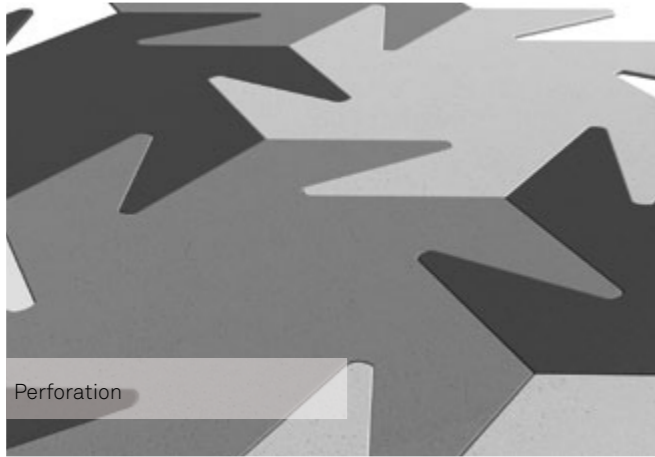
In addition to the basic protection of the hydrophobising, the glass-fibre reinforced concrete panel can be provided with a polyurethane protection. Depending on the thickness of this layer, which wears over time with the cleaning of the panels, protection against graffiti or other effects of dirt may be provided. The natural look and surface feel of glassfibre reinforced concrete is impaired by this coating.

Note:

The surface characteristics described apply to the visible side of the cladding panel. fibreC sample panels can never reflect all of the above characteristics. In large-scale cladding applications, optical phenomena occur that cannot be detected on small sample panels.

Visual changes like micro-cracks do not affect the technical characteristics of fibreC. The static functions and the long-term stability are not affected.

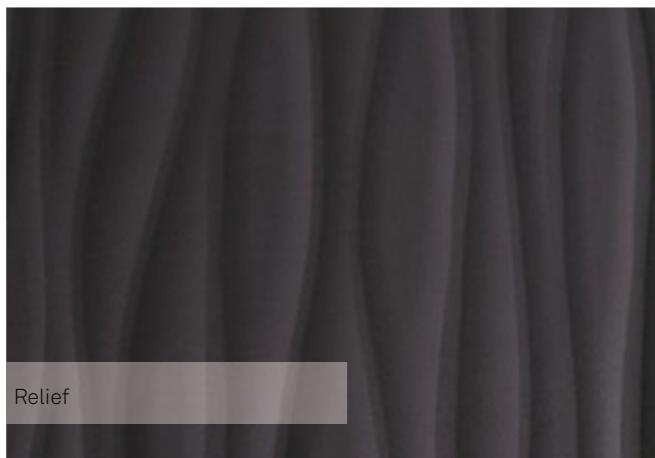




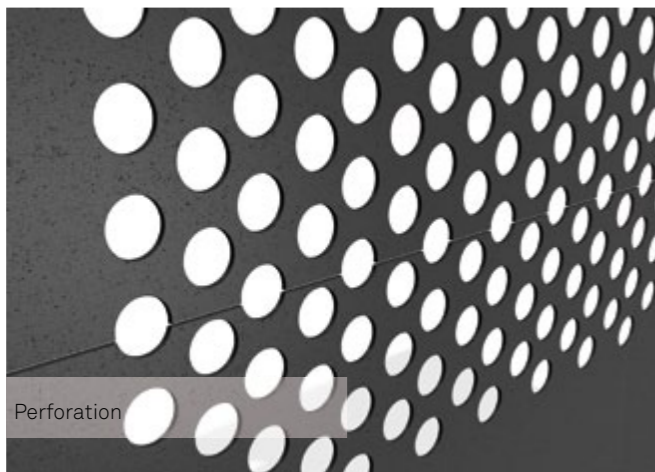
Perforation



Perforation



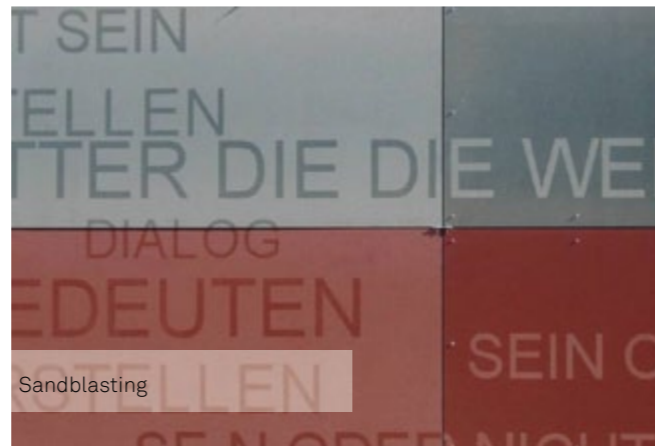
Relief



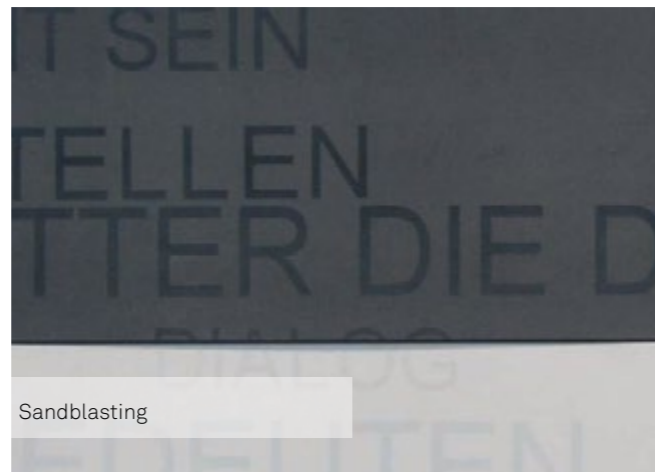
Perforation



Formed Elements



Sandblasting



Sandblasting

fibreC Design⁺

Unlimited design possibilities

In the design of cladding, there are hardly no limits for planners and architects with fibreC. The selection of ten different colours in each of three surface forms the basis. In line with current trends and developments, fibreC offers a range of additional procedures for the creation of individual building shells.

fibreC offers a wide range of possibilities for printing the surface of the panel, irradiating designs, cutting out ornaments or lettering or incorporating a relief-like surface (e.g. a wood structure).

However what primarily characterises the material fibreC are the variations in the representation of shapes. With a specially developed method, it is possible, to make glassfibre reinforced concrete flow around corners, or produce formed elements. Two-dimensional standard formed elements can be produced in real time. We would be delighted to meet you in person to tell you about triaxial curved elements.

- **Perforation:** Individual shapes or letters can be cut out of the panel using a water jet.
- **Sandblasting:** Using specially made jet films, patterns, characters or logos can be applied permanently to the panel surface
- **Digital or Screen printing:** fibreC panels can be printed using either digital or screen printing. Printing images, photographs, designs and texts are suitable for both outside and inside.
- **Relief:** Using a special technique, it is possible to produce relief-like rises on the fibreC panel.
- **Formed elements:** fibreC can be produced as U-shapes, arches, corners or other geometric shapes.
- **Three-dimensional special shapes:** Basically everything is possible. We have special projects where we work on solutions to cater for your individual requirements like special shapes or 2D and 3D formed elements.

Perforation

Base panel

- panel size: max. 1200 x 3600 mm
- surface: MA Matt, FL Ferro Light, FE Ferro
- rear side: untreated

Perforation

- perforation shape: round, oval or quadrangular, special shapes on request
- percentage of perforation: max. 30 % depending on statics
- hole diameter: min. 80 mm (other diameters on request)
- distance between holes: min. 80 mm or hole diameter
- distance between holes and panel edge: min. 80 mm
- in case of holes (rivet fixing) or undercut drillings additional distance of 50 mm

Fastening

- visible and invisible fastening systems
- based on the results of the structural analyses, an additional substructure resp. reinforcement may be required
- review of statics is required

Handling

- manual installation or vacuum suction of panels must be done with special care

Please see the data sheet „fibreC Perforation“ for more information.

Sandblasting

Base panel

- panel size: max. 1200 x 3600 mm
- surface: the base panel is always MA Matt
- colour: possible with all colours (effect depending on colour)
- rear side: untreated

Blasting

- logos and images can be negatively or positively blasted
- positive: lettering or image is opaque
- negative: lettering or image is sandblasted
- contour thickness > 5 mm

Data

Depending on the design, the data should be provided as an eps, dxf or dwg file. Where there are depictions or designs crossing over several panels, it is the customer's responsibility to ensure that the logo runs from panel to panel taking the joint into consideration. A separate graphic file must be created for each panel.

Handling

- Panel fastening: manual or with suction pad
- Handling the panel with particular care

Digital or Screen printing

Base panel

- panel size depends on printhouse/printing machine
- surface: MA Matt
- rear side: untreated

Internal application

- digital print, print resolution min. 720 dpi
- individual print possible from one unit
- bright panel colour is recommended as print base
- can be combined with screen printing or radiation

External application

- screen printing
- metallic colours possible
- highly lit 2K screen printing colours
- halftone images
- very long durability

Handling

- panel fastening: manual or with suction pad
- handling the panel with particular care

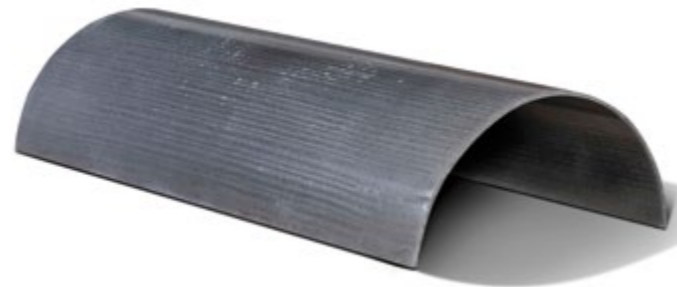
Relief

Special reliefs with embossed surface and plastic appearance are possible. We can cater for individual structure requests.

Feel free to ask for details for specific project requests and a face to face meeting.



L-moulded element



C-moulded element



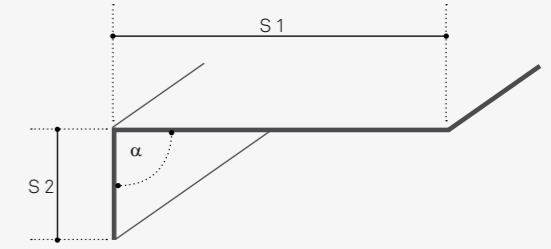
U-moulded element

Formed Elements

L-moulded element

Angular moulded element with 1 angle

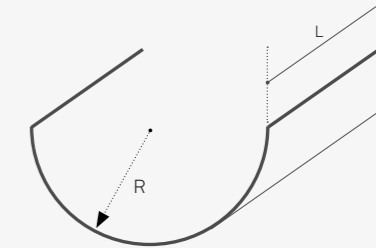
- Panel size: max. 3600/1200 mm
- 100 mm < S1 < 1100 mm
- 100 mm < S2 < 1100 mm
- S1 + S2 = max. 1200 mm
- 100 mm < L < 3600 mm
- 80° < angle α < 180°



C-moulded element

Round moulded part / 1 axial curved - 2D element

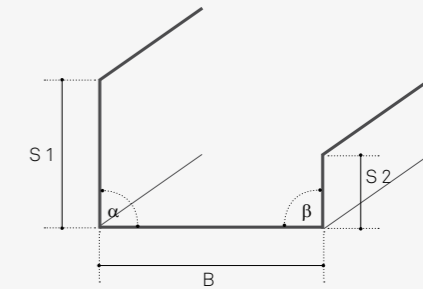
- Panel size: max. 3600/1200 mm
- R > 600 mm
- 100 mm < L < 3600 mm
- 100 mm < arch length < 1200 mm
- Bending direction: lengthwise; radius for crosswise on request
- Geometry: max. semi-circle



U-moulded element

Angular moulded element with 2 angles

- Panel size: max. 3600/1200 mm
- 100 mm < S1 < 800 mm
- 100 mm < S2 < 800 mm
- 300 mm < B < 1000 mm
- 100 mm < L < 3600 mm
- S1 + S2 + B < 1200 mm
- 80° < angle α or β < 180°



Round moulded element

2 axial curved / 3D elements - on request

Fastening options

- Visible: rivet
- Not visible: undercut anchor and fastening (in L- and U-moulded elements)

Hydrophobising & Sandblasting

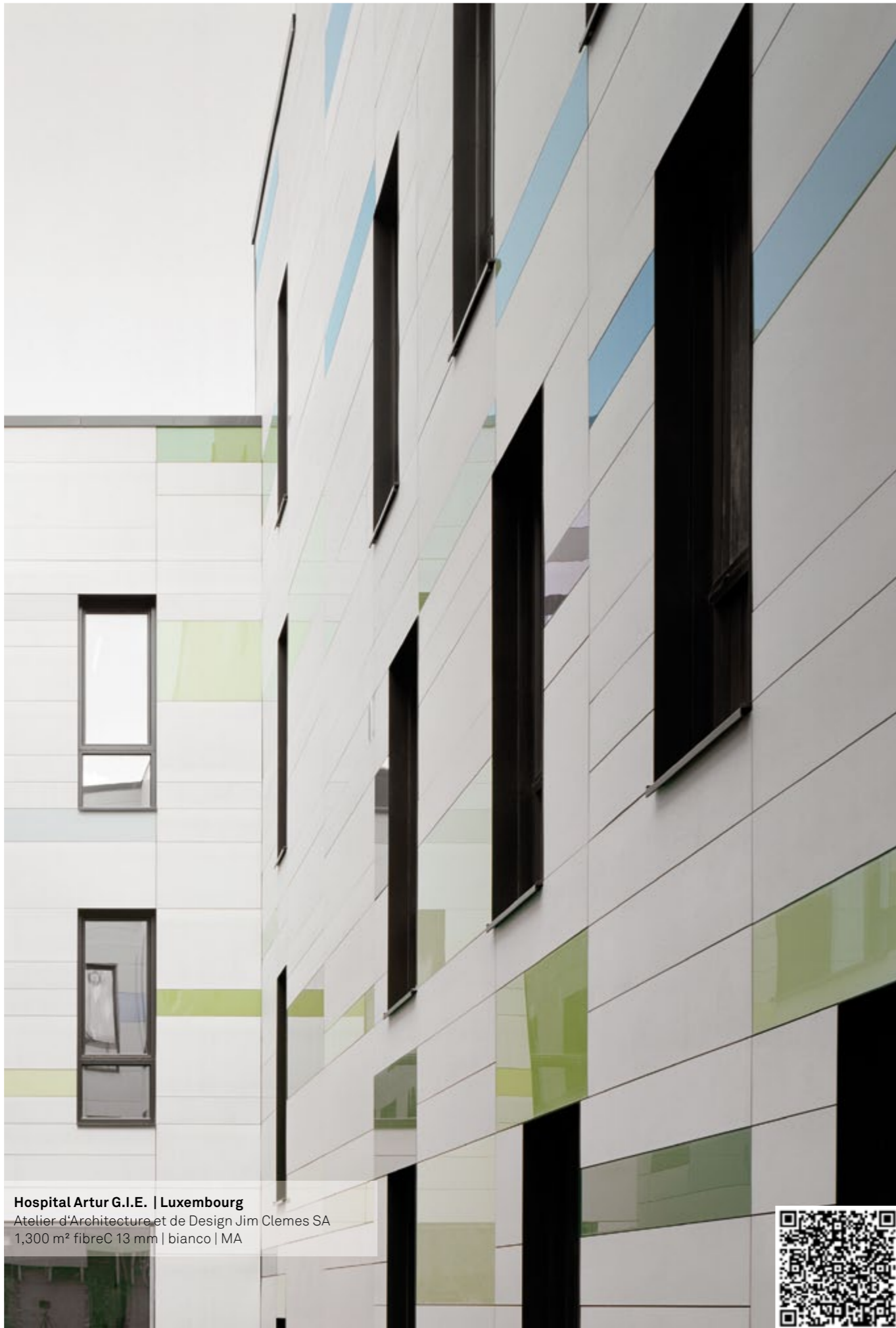
In machined elements, hydrophobising is applied manually. The appearance of the manually applied coating may vary from standard panels. Sandblasted surfaces (only FE possible) may in formed elements likewise vary from the straight standard panel, as all parts are blasted by hand.

Tolerances in moulded elements

Each moulded element is subjected to a dimensional inspection and checked for length, width, angle and thickness. All results are recorded in internal reports. The values are measured with residual moisture of 6 - 10 %.

Length	Tolerances
length up to 1000 mm	± 2.0 mm
length above 1000 mm	± 2.5 mm
length above 2000 mm	± 3.0 mm
length above 3000 mm	± 4.0 mm
Width	Tolerances
width up to 1000 mm	± 2.0 mm
width above 1000 mm	± 3.0 mm
Thickness	Tolerances
moulded element 13 mm	± 1.3 mm

Radius at round elements	Tolerances
radius up to 500 mm	± 2.0 mm
radius 500 - 1500 mm	± 3.0 mm
radius above 1500 mm	on request
Diagonal	Tolerances
diagonal difference up to 1500 mm	± 4.0 mm
diagonal difference above 1500 mm	± 5.0 mm
diagonal difference above 2500 mm	± 6.0 mm
diagonal difference above 3500 mm	± 7.0 mm
Edge	Tolerances
edge radius up to 90° 10 mm	± 8.0 mm
Angle	Tolerances
angular deviation	± 2°



Hospital Artur G.I.E. | Luxembourg
 Atelier d'Architecture et de Design Jim Clemes SA
 1,300 m² fibreC 13 mm | bianco | MA



Cladding System

Ventilated Rainscreen Cladding.....32
 Corner Solutions.....34
 Joints.....35
 FittingDirection.....35

Ventilated Rainscreen Cladding

The facade cladding with fibreC is designed as a ventilated rainscreen cladding as per EN 18516. There must be appropriate air circulation behind the cladding to ensure the complete system has sufficient ventilation and the ventilation distance is based on the permitted standard.

The panels must be fitted on a rigid, stable and level substructure that has been statically dimensioned. There must be no load forces transferred onto the panels. All the regulations of the substructure manufacturers must be followed.

Load-bearing masonry

The stability of the construction must be demonstrated by a static analysis.

Substructure

The substructure must be designed in metal (wall angle bracket). The aluminium or steel substructure is a flexible system that meets the requirements of building regulations for non-combustible cladding. Any thickness of heat insulation can be used with this substructure. It also evens out any building tolerances without any difficulty.

Basically, the fibreC cladding panels (in the case of small-area cladding) can be fitted on a wood substructure. This application must be checked in individual cases and statically calculated.

Decoupling

The substructure must be decoupled as per EN 18516.

Heat insulation

Form-stable, hydrophobised mineral fibre cladding insulation boards of flammability class A must be used. The panel joints must be designed as a tight press joint. The insulation must be fitted so stable that the panels cannot come off and so that the ventilation cross section does not close.

Ventilation

The free vertical ventilation cross section between the cladding panel and the heat insulation must be at least 200 cm²/m.

Wind loading

The wind loading must be factored into the fixing of the fastening and the distances of the subconstruction. In the load case wind suction, a difference must be made between the normal- and edge area of the cladding.

One important feature of the ventilated rainscreen cladding system (VRC) is the structural separation of both the components insulation and cladding. The space created regulates the heat balance in the

building and the characteristic structure of the VRC leads to a range of structural-physical and economic benefits.

Structural-physical benefits

- Thermal insulation
- Fire protection
- Protection against heavy rain
- Condensation water protection
- Sound insulation
- Long life
- Profitability
- Freedom of scope
- Protection against the cold

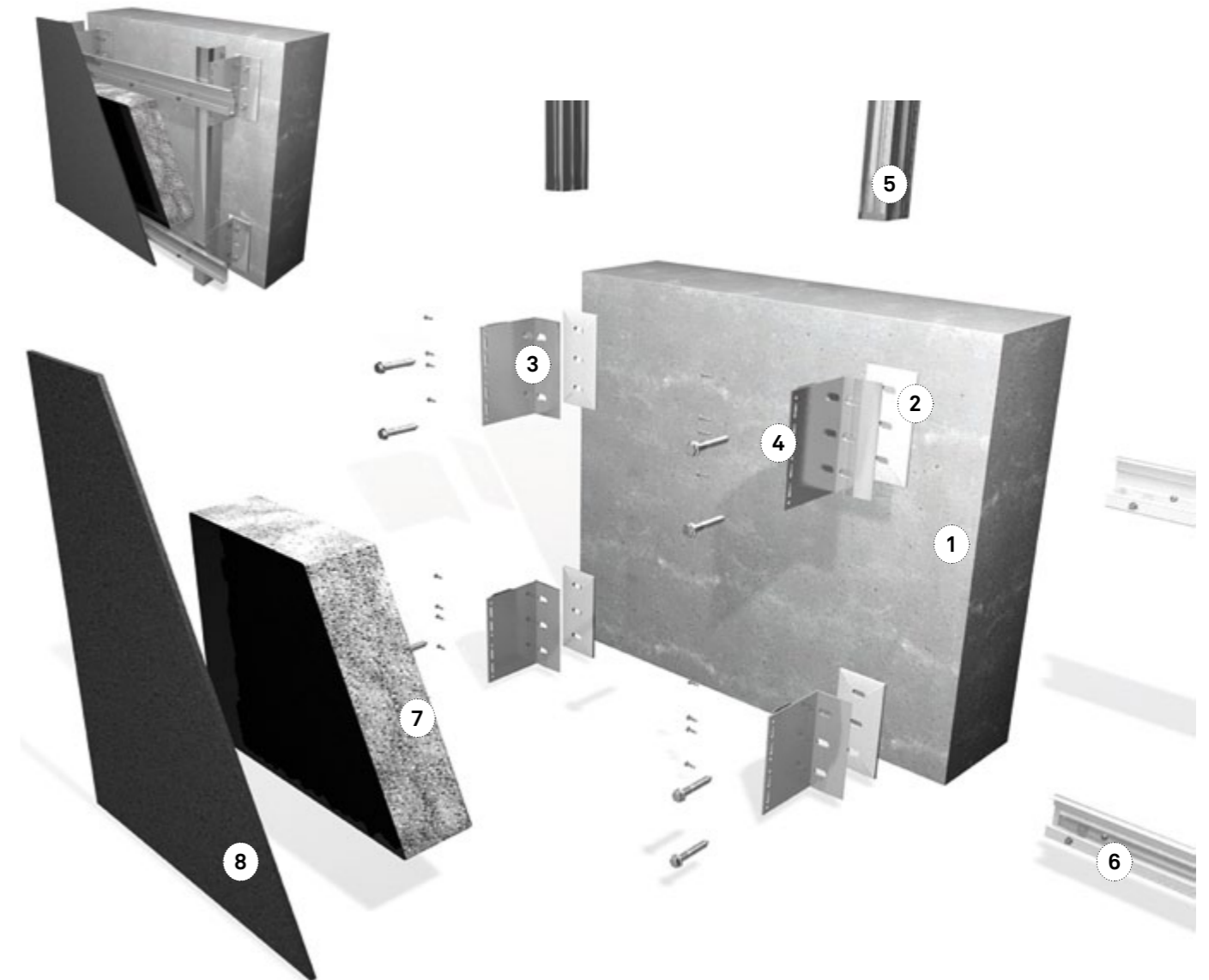
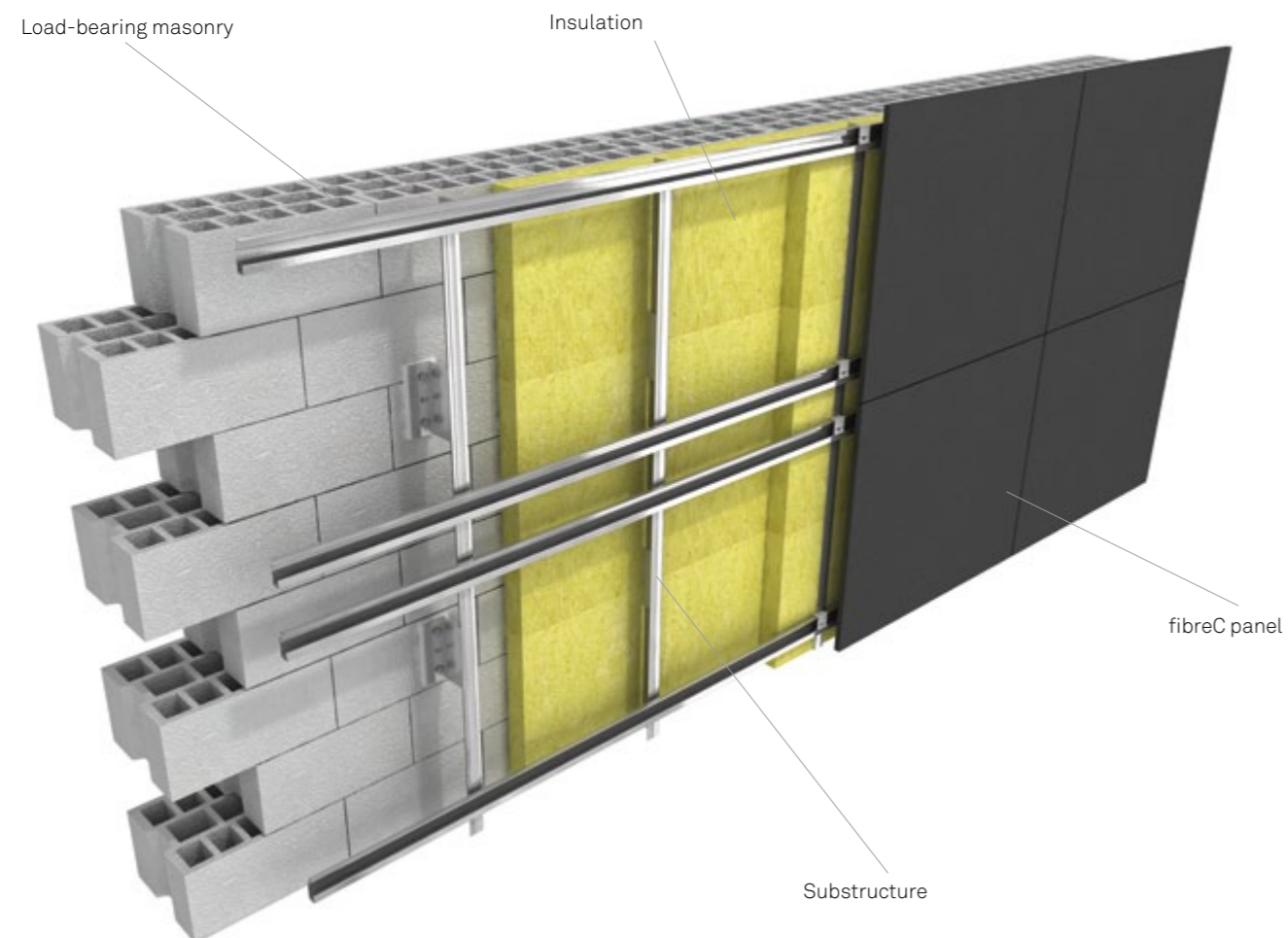
Structure of a ventilated cladding

- 1) Masonry
- 2) Thermal separator
- 3) Wall bracket
- 4) Bracket screw
- 5) Vertical profile
- 6) Suspension rail
- 7) Insulation
- 8) fibreC panel

Alternative areas of application for the cladding

- Infillings post and beam constructions
- Overlapping cladding
- Exterior cladding for composite elements
- Moulded coverings
- Cladding for window embrasures
- Cladding for window frames and doorframes
- Cladding for internal walls
- Verge and eave terminations
- Roof soffits
- Balcony panelling
- Portal constructions
- Skirting board cladding

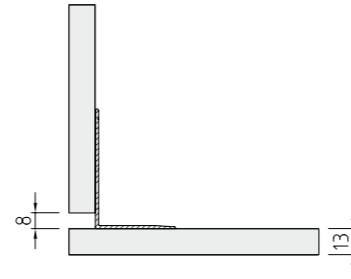
Details on all areas on request.



Corner Solutions

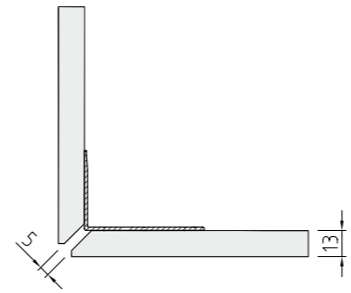
Open corner

The simple and efficient corner solution for fibreC cladding. The angle profile serves to brace the panel edges and ensures the corner is finished accurately.



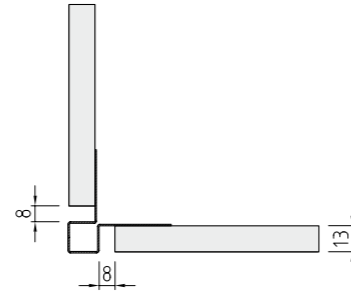
Mitre

A significant feature of the corner design with fibreC panels cut on a mitre is the elegant and barely visible corner joint.



Closed corner

The square corner profile offers a host of design possibilities and the advantage of easy panel fastening. The corner profile comes in different sizes and colours.

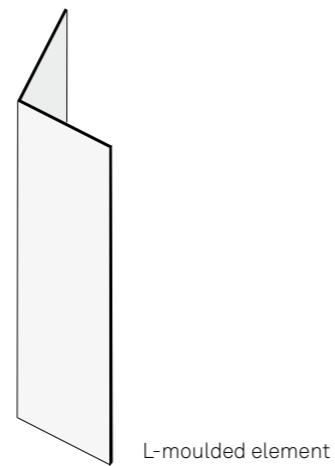
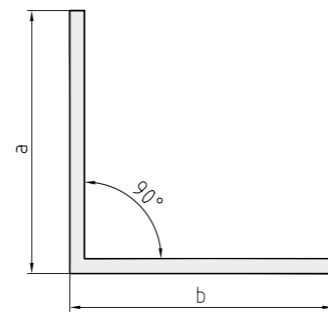


Corner solution with one element

- Panel size: max. 3600/1200 mm
- $100\text{ mm} < S1 < 1100\text{ mm}$
- $100\text{ mm} < S2 < 1100\text{ mm}$
- $S1 + S2 = \text{max. } 1200\text{ mm}$
- $100\text{ mm} < L < 3600\text{ mm}$
- $80^\circ < \text{angle } \alpha < 180^\circ$

Note

Sandblasted surfaces (only FE possible) may vary in formed elements from straight standard panels, as all parts are blasted manually.

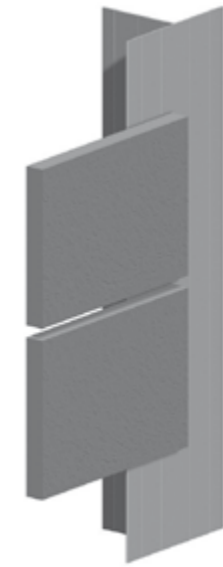


Joints

Open joint

Panel connections with an open joint do not impair the consistent homogeneous image of the cladding.

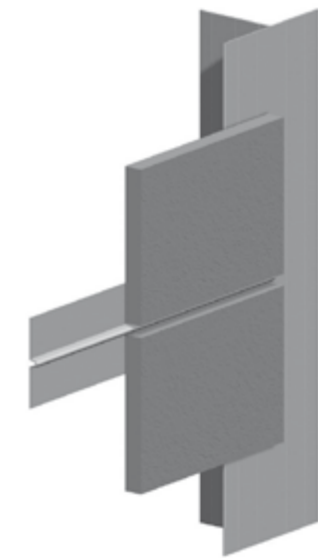
Joint width: mind. 8 mm



Closed joint

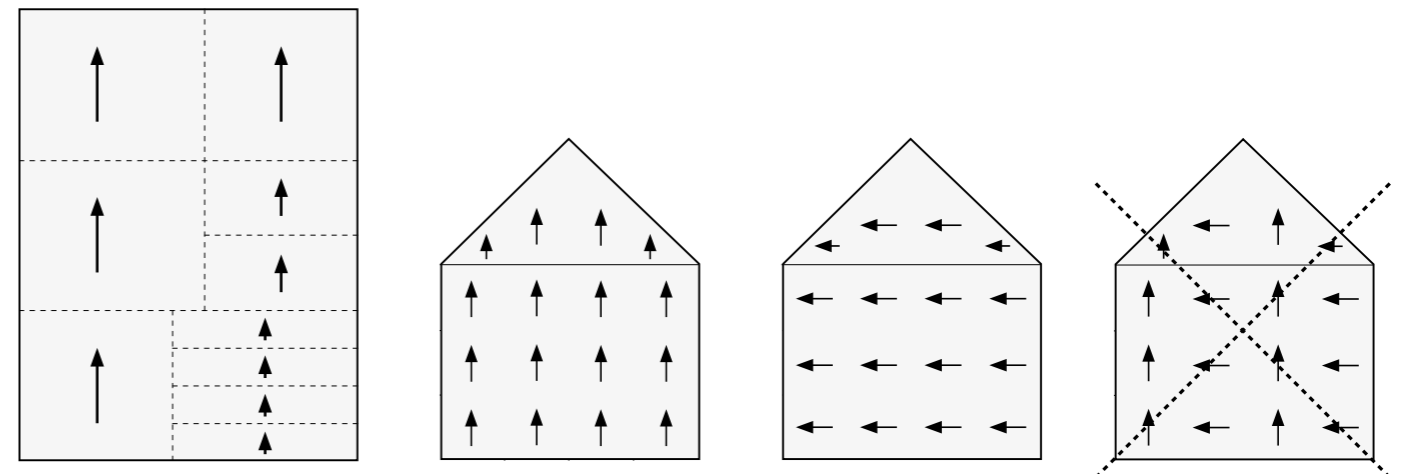
The joints are closed using joint profiles that can be designed in different colours and dimensions.

Joint width: min. 8 mm



Panel alignment

The installation directions must be followed to ensure a uniform cladding appearance. The general processing information and installation instructions for fibreC apply.





Primary School St. Walburg | Italy
S.O.F.A. Architects | Vienna
1,200 m² fibreC 13 mm | silvergrey | FE

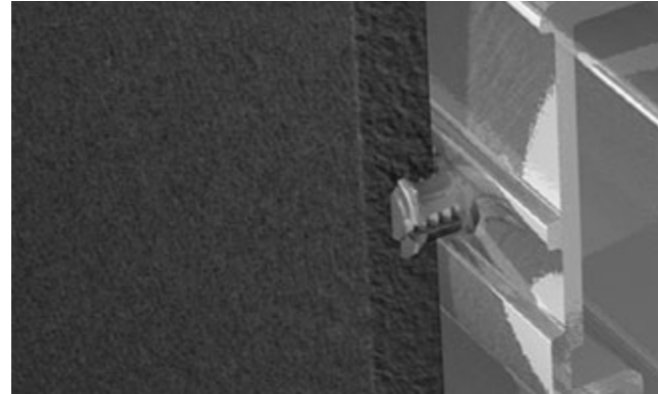
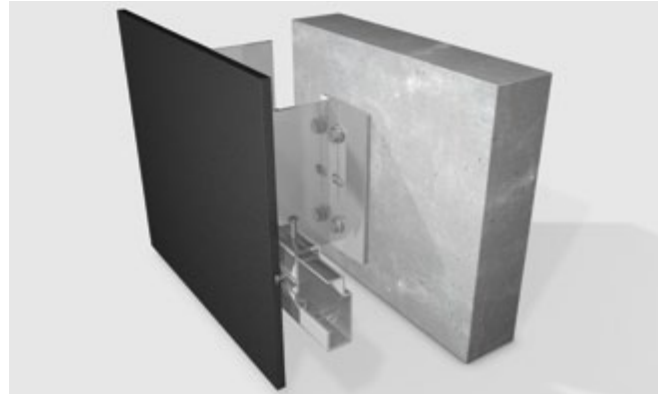


Types of Fastening	
Overview of Fastening Types.....	38
Undercut.....	40
Rivets.....	46
Adhesive.....	52

Types of Fastening

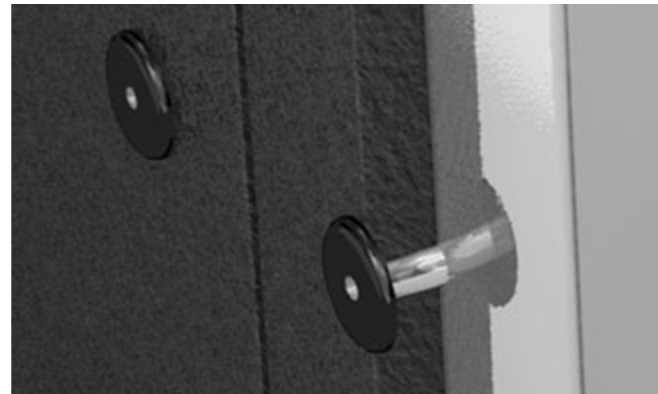
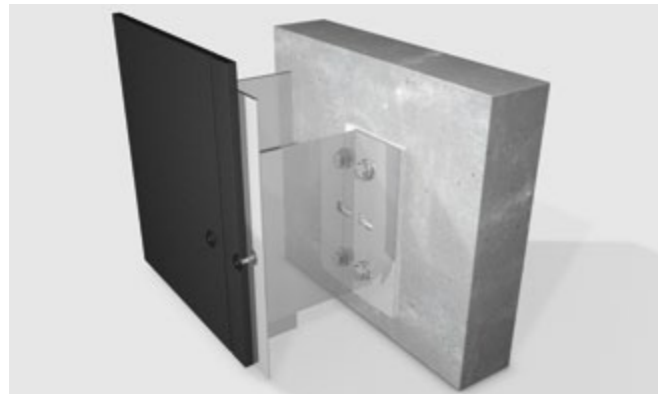
Alongside individual form- and colour freedom in the fibreC panels, visible or concealed fixings can achieve additional aesthetic effects.

Depending on the construction project, fibre can basically be fitted as follows:



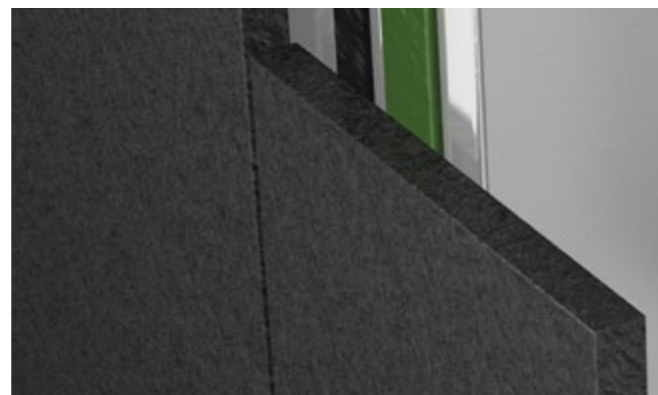
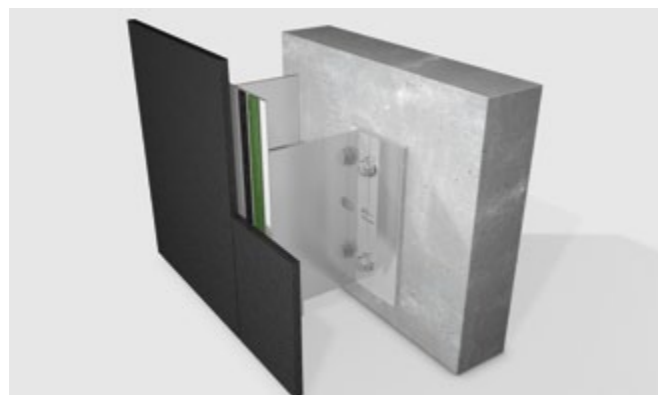
Concealed fastening with undercut anchor

As an alternative to the visible fastening, fibreC can be mechanically fastened concealed using undercut anchors.



Visible fastening with rivets

Fastening with rivets means fibreC can be fitted quickly and permanently. The panels are fastened with floating- and fixed points to cancel out thermal length variations in the materials used.



Concealed fastening with adhesive

fibreC glassfibre reinforced concrete panels can also be fastened with adhesive with the help of a specific substructure.

Note
The information listed on the following pages is not part of the sales performance of Rieder. Rieder sells fibreC cladding panels and explicitly neither fastening agents nor substructures. Any liability for the substructure is excluded. The instructions given by the manufacturer of the substructure must be included in the detailed planning of the substructure. The

possible types of fastening vary depending on the particular construction project and the particular manufacturer is responsible for the fastening systems. All visualisations in the brochure are schematic representations of the system and structural-physical requirements and project details are not included in the data.



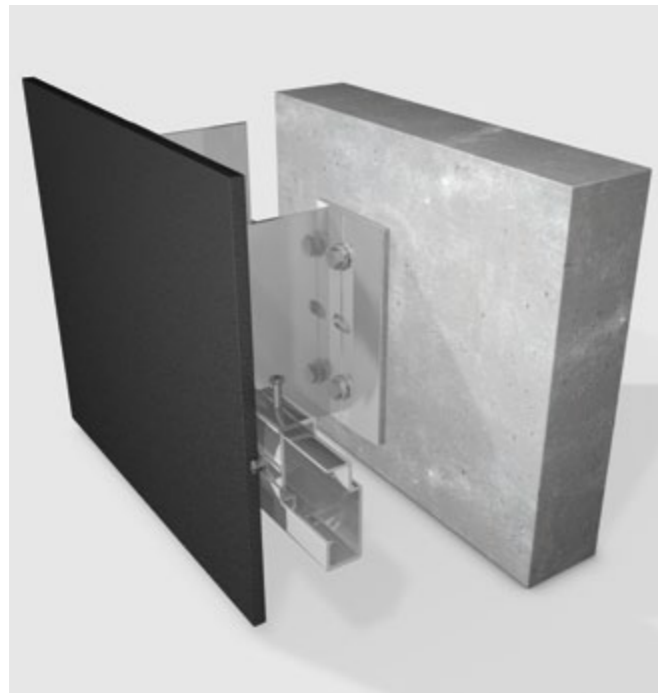
Hospital Artur G.I.E. | Luxembourg
Atelier d'Architecture et de Design Jim Clemes SA
1,300 m² fibreC 13 mm | bianco | MA



Invisible Fastening with Undercut Anchor

Panels with a thickness of 13 mm can be fitted invisible on the back with metal clips and special dowels. For this purpose, each panel has on the top row of clips adjusting screws and a fixed point fastening (screw or clip), with the result that it can be aligned and no

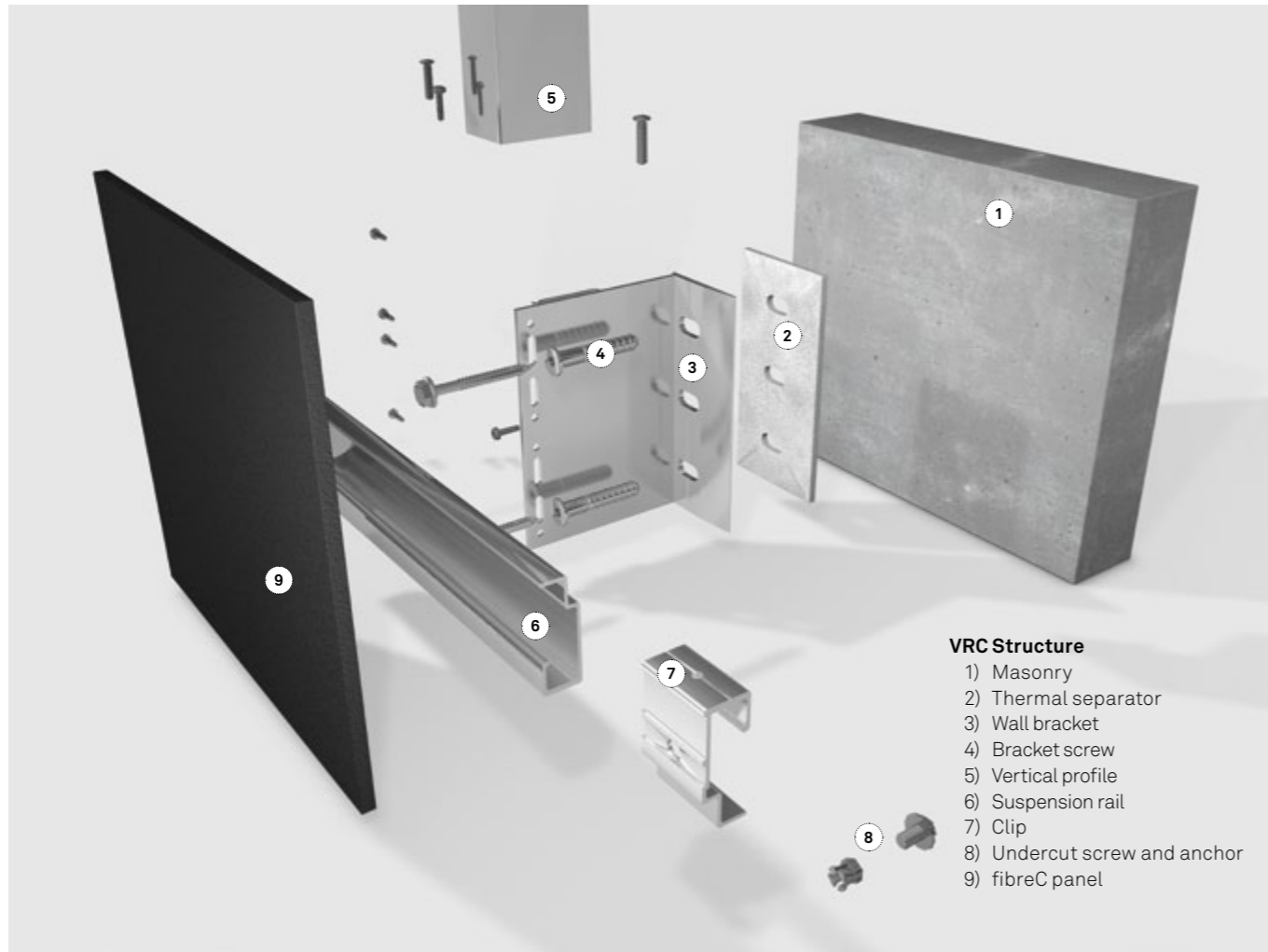
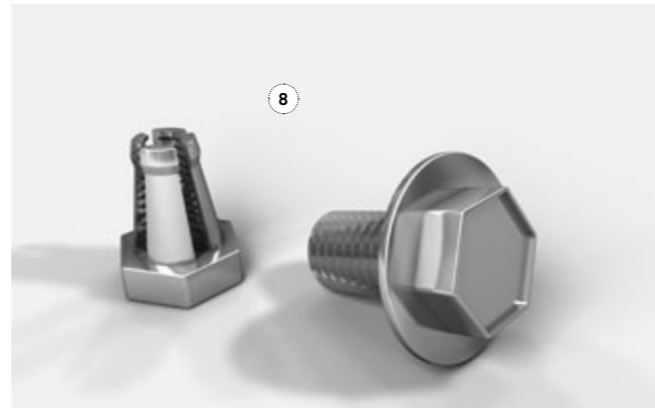
displacement occurs. The maximum construction height is 100 m. Additional heights must be checked with a special approval by the customer.



Details fastening with undercut anchor



Download



VRC Structure

- 1) Masonry
- 2) Thermal separator
- 3) Wall bracket
- 4) Bracket screw
- 5) Vertical profile
- 6) Suspension rail
- 7) Clip
- 8) Undercut screw and anchor
- 9) fibreC panel

Planning Details

Substructure

Exclusively metal substructure.

Fastening

With undercut anchors and clips suspended in horizontal aluminium carrier profiles. Fasteners recommended in the system approval: Keil anchor (www.keil.eu) with the marking Hs=8.5 mm or equivalent.

The undercut anchor must be tightened with a torque of 2.00 – 4.00 Nm. Depending on the substructure used, there are suitable screws in different lengths. One must ensure that clips, anchors and screws belong to one system and match each other.

Preparation

In the Rieder factory, the panels are both tailored and prepared for fitting with undercut anchors. The bore holes for the undercut anchors can be pre-drilled in the factory if required. Any fastening agents required like system anchors, screws and metal profiles are not supplied by Rieder.

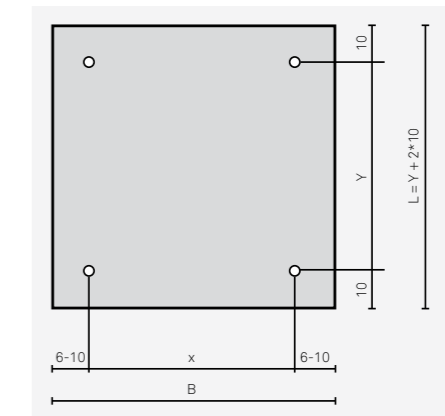
Joint

Joints must be at least 8 mm wide. If the horizontal joints are designed with 20 mm, panels can be unhooked or hooked on at a later date (please follow the manufacturer's instructions). Depending on the substructure, a sponge rubber layer must be used between the clip and the panel. The length of the screw for the undercut anchor varies depending on the system.

Absorbable loads of a panel fastened with four undercut anchors

fibreC with undercut anchor		panel thickness 13 mm
panel width B [cm]	span Y [cm]	pressure/suction load [kN/m²]
60	40	4.4
	60	3.3
	80	2.0
	100	1.3
	120	0.9
80	40	3.1
	60	2.5
	80	1.9
	100	1.2
	120	0.9
100	40	1.8
	60	1.7
	80	1.6
	100	1.1
	120	0.8
120	40	1.2
	60	1.1
	80	1.1
	100	1.0
	120	0.8

System sketch



How to read statics

1. Select the panel width (B)
2. Choose the relevant span (Y) in column 2
3. In column 3 you can read the maximum absorbable loads

Note

All the visualisations in the brochure are schematic representations of the system and structural-physical requirements and project details are not included in the data. The services provided by Firma Rieder Smart Elements GmbH do not include

static calculations. The sample calculation listed here does not dispense with an individual test by a structural designer. Rieder does not accept any liability for statics.

Absorbable loads of a panel fastened with several undercut anchors

Panels with a dead weight greater than 60 kg are covered by the values in the column double clips

fibreC with undercut anchor		panel thickness 13 mm			
panel width B [cm]	span Y [cm]	g > 60 kg above panel length L [m]	Pressure/suction load Single-clips [kN/m ²] (Fig. 1)	Pressure/suction load Double-clips [kN/m ²] (Fig. 2)	
				a = 100 mm	a = 200 mm
60	40	2.8	2.7	2.6	
	60		1.8	1.7	
	80		1.3	1.3	
	100		0.9	1.0	
	120		0.6	0.7	
80	40	2.1	2.0	1.9	3.1
	60		1.3	1.3	2.1
	80		1.0	1.0	1.5
	100		0.7	0.8	1.0
	120		0.5	0.6	0.7
100	40	1.7	1.6	1.5	2.5
	60		1.1	1.0	1.7
	80		0.8	0.8	1.2
	100		0.6	0.6	0.8
	120		0.4	0.4	0.6
120	40	1.4	1.3	1.3	2.1
	60		0.9	0.8	1.3
	80		0.7	0.6	0.9
	100		0.5	0.5	0.6
	120		< 0.4 out of range	< 0.4 out of range	0.7

System sketch

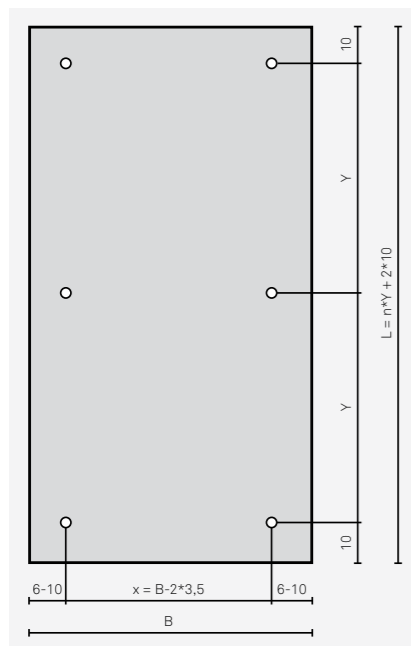


Fig. 1: Fastening with single-clips
Dead weight < 60 kg

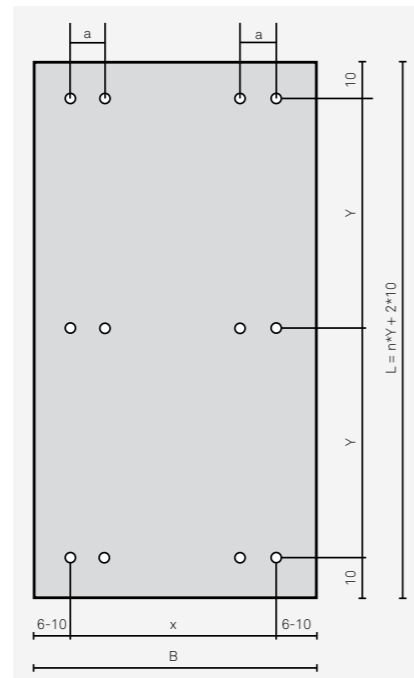


Fig. 2: Fastening with double-clips in short direction
Dead weight > 60 kg

Absorbable loads of a panel fastened with several undercut anchors

fibreC with undercut anchor		panel thickness 13 mm				
panel width B [cm]	span Y [cm]	g > 60 kg above panel length L [m]	Pressure/suction load without middle row [kN/m ²] (Fig. 3)		Pressure/suction load with middle row [kN/m ²] (Fig. 4)	
			a = 100 mm	a = 200 mm	a = 100 mm	a = 200 mm
100	40	1.7	2.0	2.0		
	60		2.0	2.0		
	80		1.2	1.7		
	100		0.8	1.2	0.9	1.3
	120		0.6	0.9	0.6	1.0
120	40	1.4	1.3	1.3		
	60		1.3	1.3		
	80		1.1	0.6		
	100		0.7	1.0	0.7	1.0
	120		0.5	0.7	0.5	0.8

How to read statics

1. Select the panel width (B)
2. Choose the relevant span (Y) in column 2
3. In column 3 you can read the maximum absorbable loads

System sketch

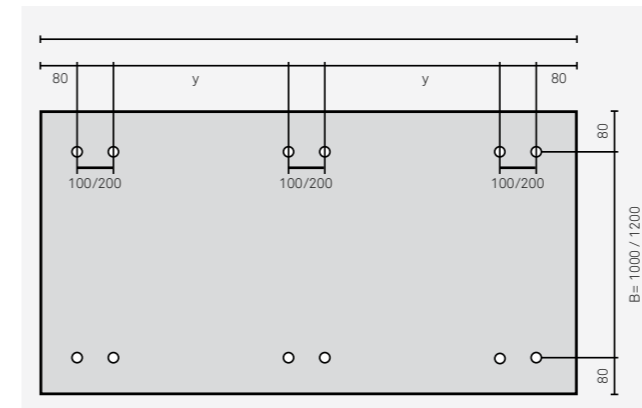


Fig. 3: System fastened horizontally
with clip distance 100 / 200 mm without middle row

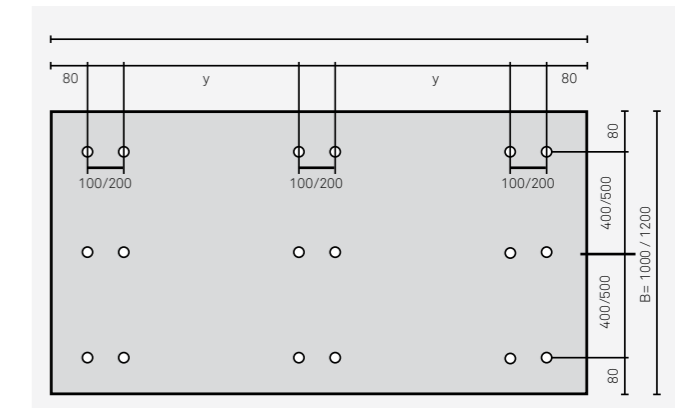
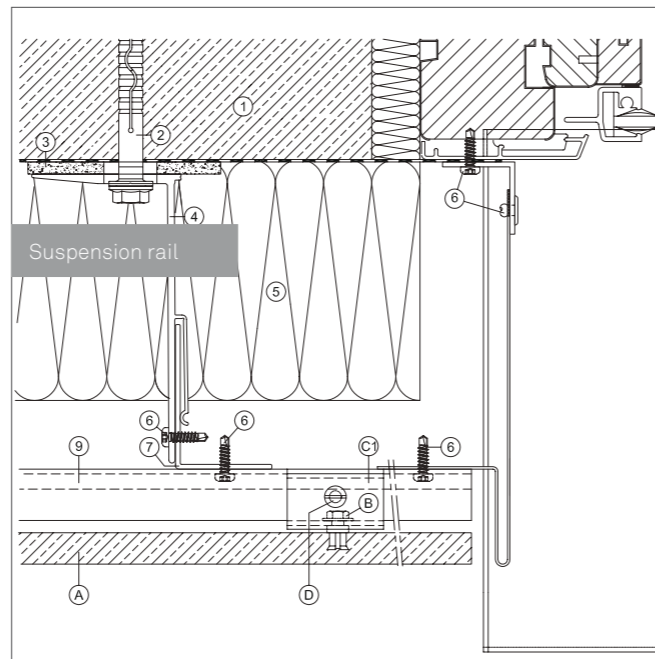
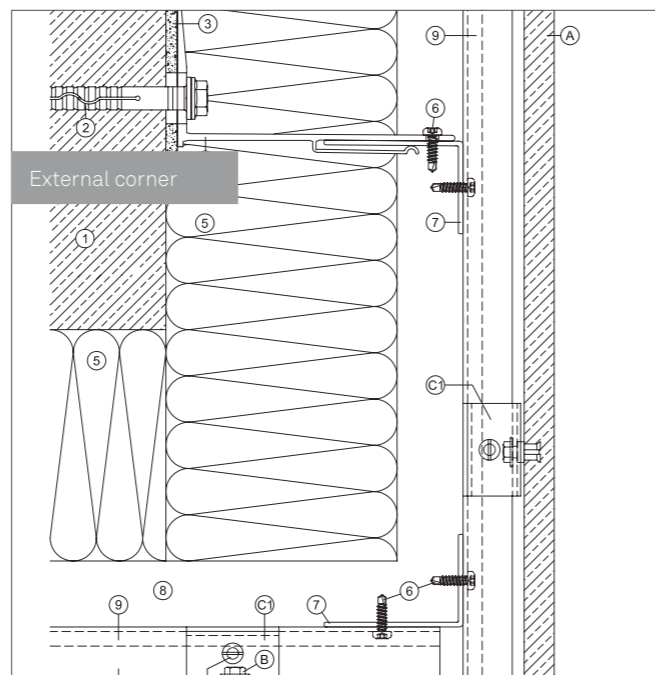
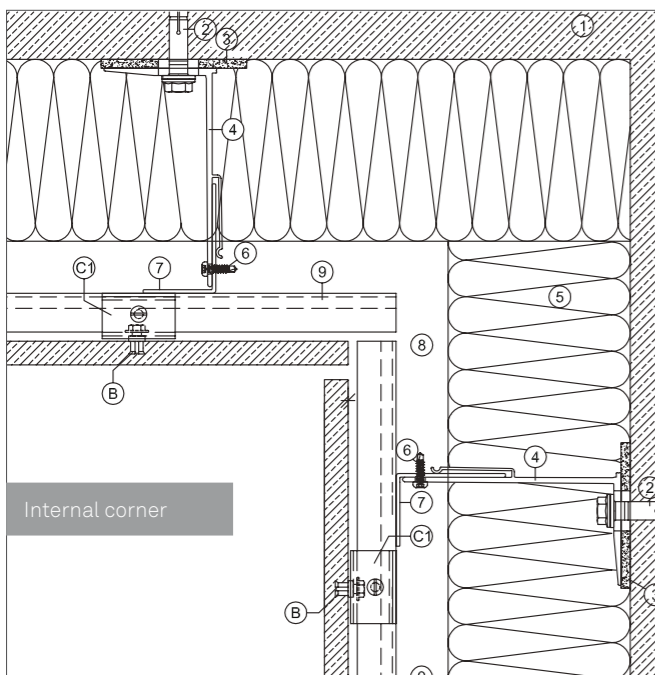
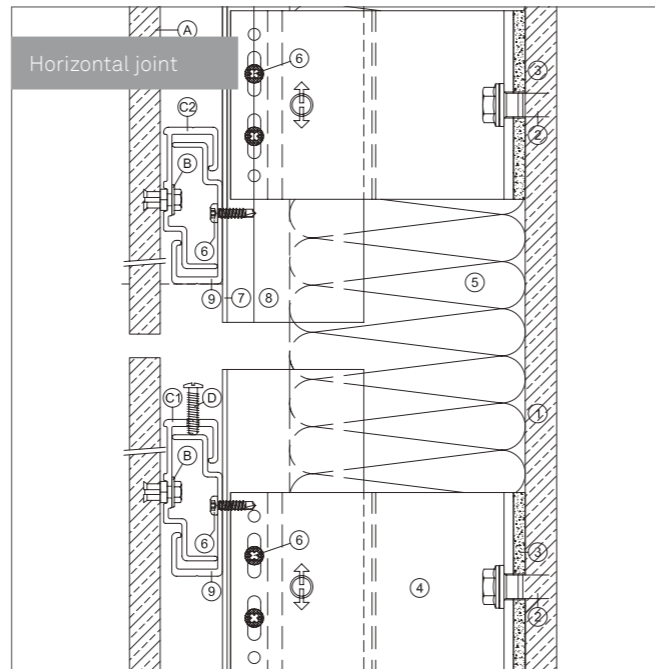
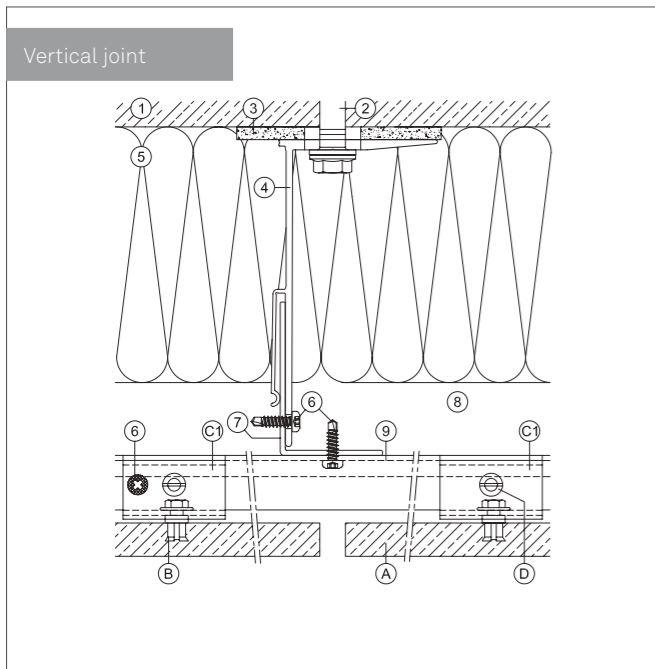


Fig. 4: System fastened horizontally
with clip distance 100 / 200 mm with middle row

Note

The services provided by Rieder Smart Elements GmbH do not include static calculations. The sample calculation listed here does not dispense with an individual test by a structural designer. Rieder does not accept any liability for statics.



Legend

- A) fibreC cladding panel
- B) Undercut anchor
- C) Clip
- D) Adjusting screw

- 1) Masonry
- 2) Fastening dowel
- 3) Thermal Separator
- 4) Wall Bracket
- 5) Insulation
- 6) Bracket screw
- 7) Vertical profile
- 8) Ventilation space
- 9) Suspension rail



Hypo Landesbank Vorarlberg | Austria
 Dietrich | Untertrifaller Architects
 1,900 m² fibreC 13 mm | ivory | FE

Visible Fastening with Rivets

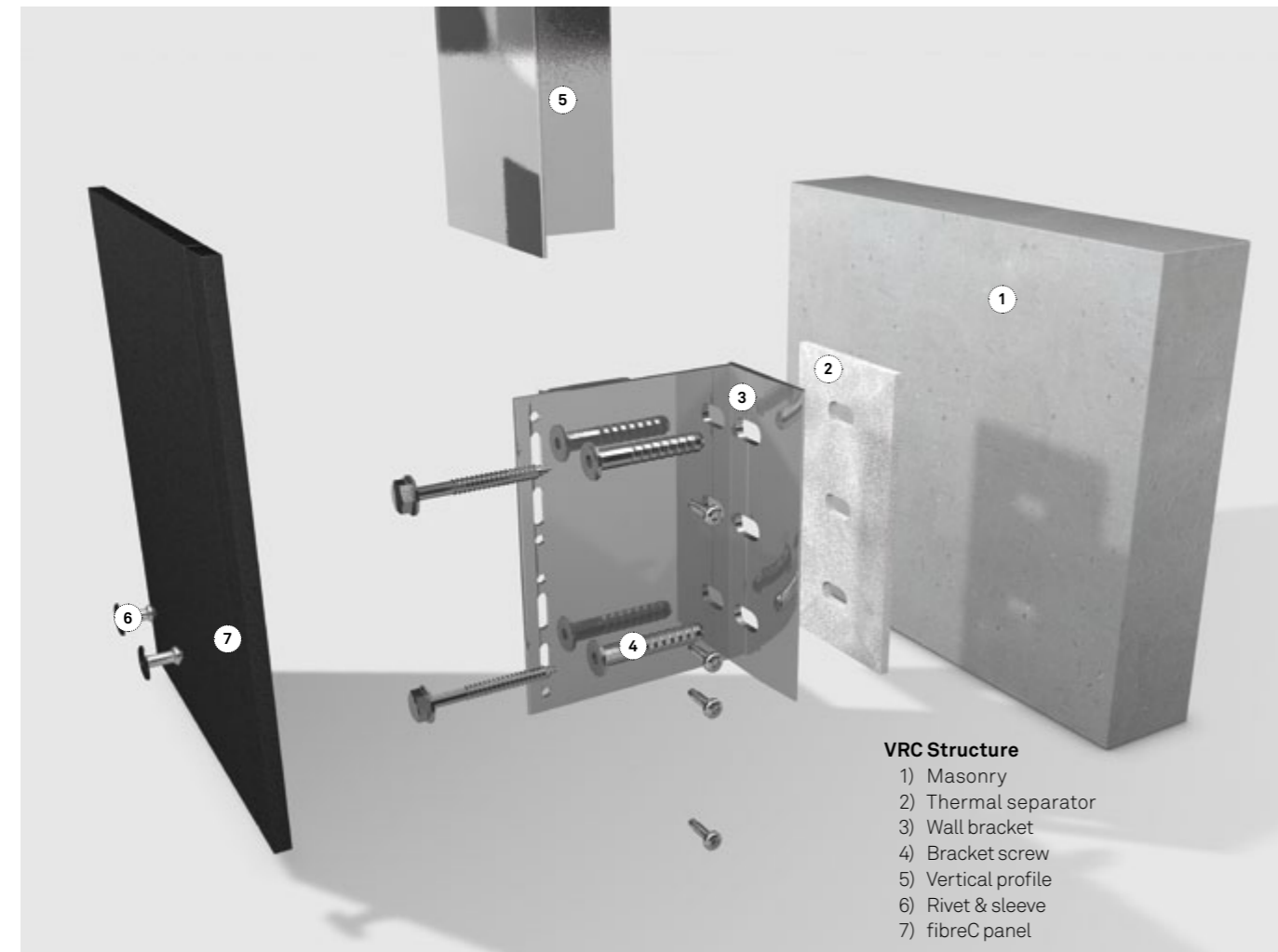
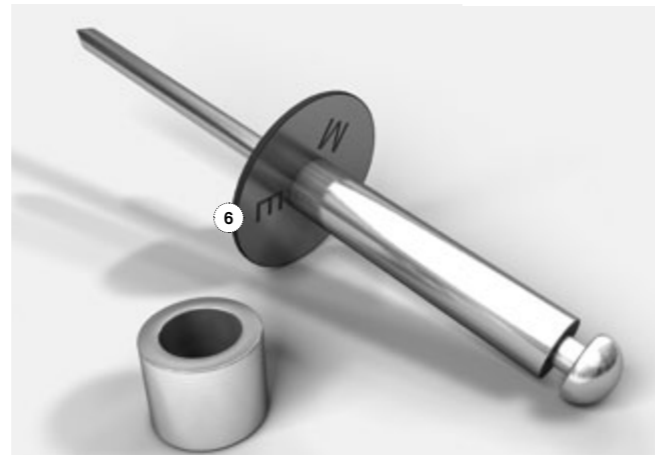
The panels can be fastened with rivets on a metal substructure. The substructure will consist preferably of vertical profiles, fitted using wall bracket holders to the wall. The substructure must be adjust-

able to balance out any building tolerances and facilitate smooth fitting.

Details
Fastening with rivets



Download



VRC Structure

- 1) Masonry
- 2) Thermal separator
- 3) Wall bracket
- 4) Bracket screw
- 5) Vertical profile
- 6) Rivet & sleeve
- 7) fibreC panel

Planning Details

Substructure

Exclusively metal substructure.

Fastening

With rivets on vertical aluminium support profiles. Recommended rivets with special colours matching fibreC surfaces are available from different fastener manufacturers. Indicate the standard fibreC colour used and the manufacturer will give you a matching recommendation for the rivet colour.

Preparation

Holes in the substructure must be drilled using a centre sleeve to ensure the bore hole is centrally aligned. The bore diameter for the substructure is 5.1 mm. Two sleeves must be used per panel and they must usually be arranged in the centre point of the panel. There might be country-specific variations depending on the respective approval. The sleeves fix the panels; they are described as a fixed point. The rivets must be tightened using a rivet template matching the rivets. The rivet template has a load-distributing effect and creates a small clearance between rivet head and cladding board, with the result that movements in the cladding board can be absorbed.

Joint

Joint width at least 8 mm.

Cladding rivet aluminium/Niro with head varnish:

Panel thickness 13 mm
Dimension: 5 x 23 mm
Head diameter: 14 mm
Clamping range: 14.00 – 17.5 mm
Bore hole substructure: 5.1 mm
Bore hole fibreC panel: 8 mm

Appropriate sleeves for the rivet:

Panel thickness 13 mm
Article: distance sleeve aluminium
Dimension: 7.7 mm x 5.1 mm x 12 mm

Note

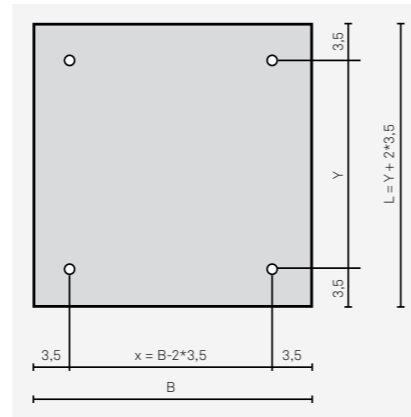
All the visualisations in the brochure are schematic representations of the system and structural-physical requirements and project details are not included in the data. The services provided by Rieder Smart Elements GmbH do not include

static calculations. The sample calculation listed here does not dispense with an individual test by a structural designer. Rieder does not accept any liability for statics.

Absorbable loads of a panel fastened with four rivets

fibreC panel riveted		panel thickness 13 mm	
panel width B [cm]	span Y [cm]	pressure load [kN/m ²]	suction load [kN/m ²]
60	40	3.4	4.2
	60		3.0
	80		1.8
	100		1.2
	120		0.9
80	40	1.9	2.3
	60		2.1
	80		1.6
	100		1.1
	120		0.8
100	40	1.2	1.5
	60		1.4
	80		1.2
	100		1.0
	120		0.8
120	40	0.8	1.0
	60		1.0
	80		0.9
	100		0.8
	120		0.7

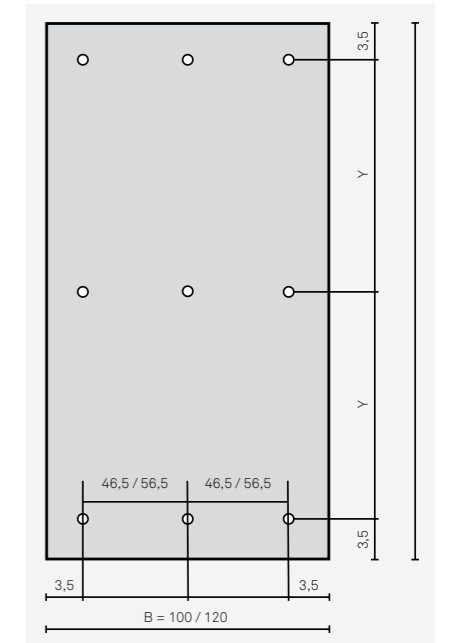
System sketch



Continuation: Absorbable loads of a panel fastened with several rivets

fibre C panel riveted		panel thickness 13 mm	
panel width B [cm]	span Y [cm]	pressure load [kN/m ²]	suction load [kN/m ²]
100	40	5.2	2.0
	60		1.2
	80		0.8
	100		0.6
	120		< 0.5 out of range
120	40	3.4	1.5
	60		1.0
	80		0.7
	100		< 0.5 out of range
	120		< 0.5 out of range

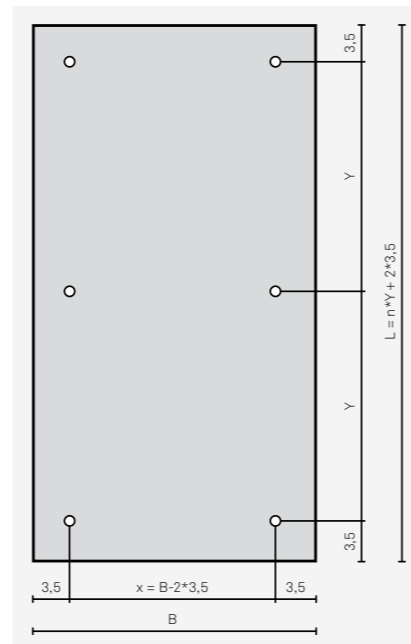
System sketch



Absorbable loads of a panel fastened with several rivets

fibreC panel riveted		panel thickness 13 mm	
panel width B [cm]	span Y [cm]	pressure load [kN/m ²]	suction load [kN/m ²]
60	40	3.4	2.9
	60		1.6
	80		1.0
	100		0.7
	120		0.5
80	40	1.9	2.4
	60		1.3
	80		0.8
	100		0.6
	120		< 0.5 out of range
100	40	1.2	2.1
	60		1.1
	80		0.7
	100		0.5
	120		< 0.5 out of range
120	40	0.8	1.9
	60		0.9
	80		0.6
	100		< 0.5 out of range
	120		< 0.5 out of range

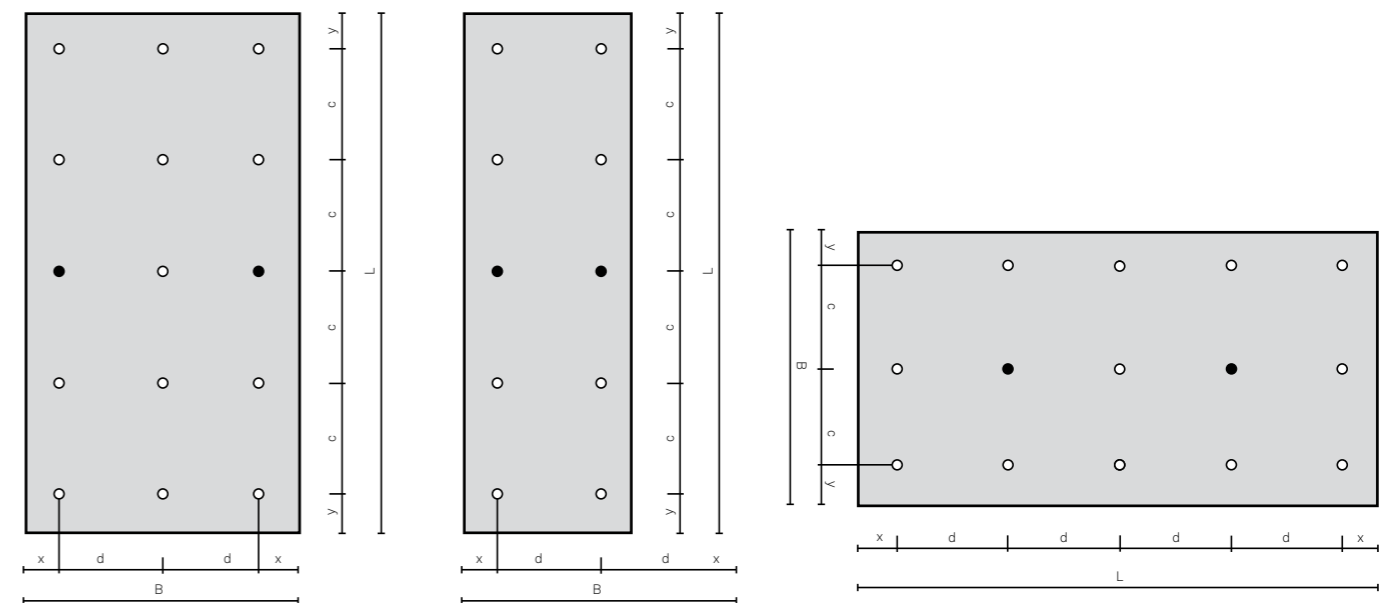
System sketch



Fixed and floating points

All holes in the panels must be drilled with a diameter of 8 mm. The panels must be fixed with fixed and floating points. The fixed points must be designed on site during the assembly using an anchor point sleeve.

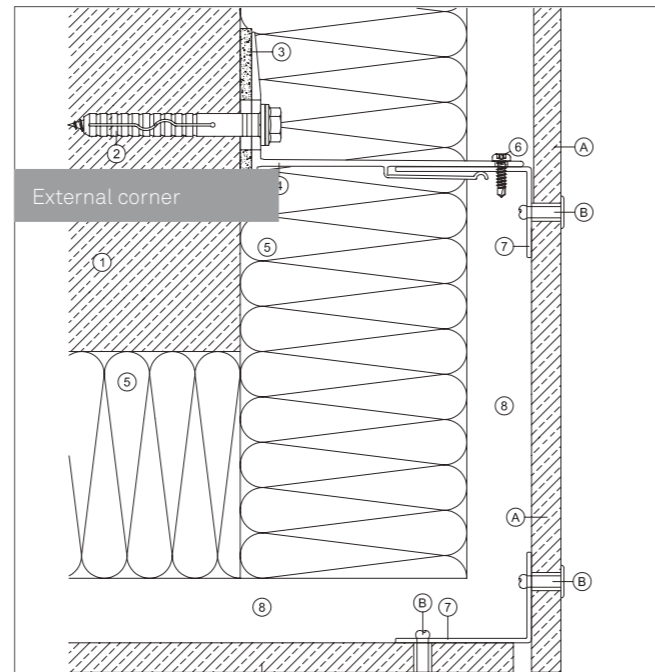
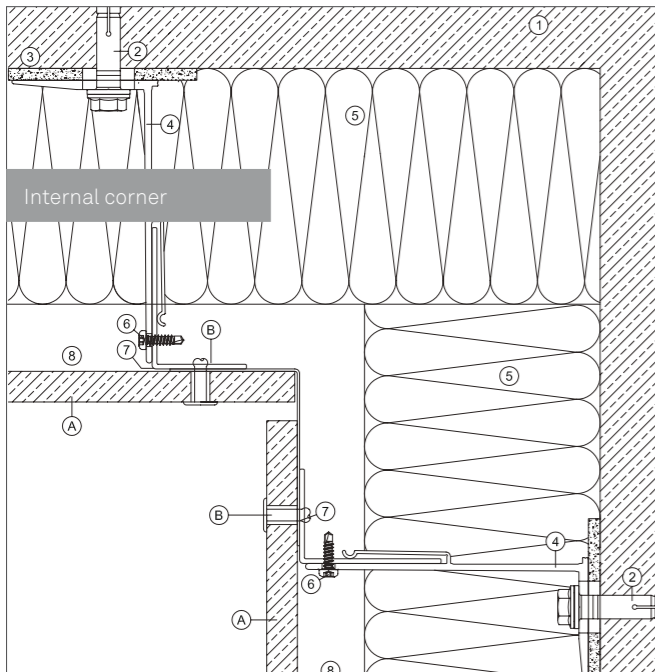
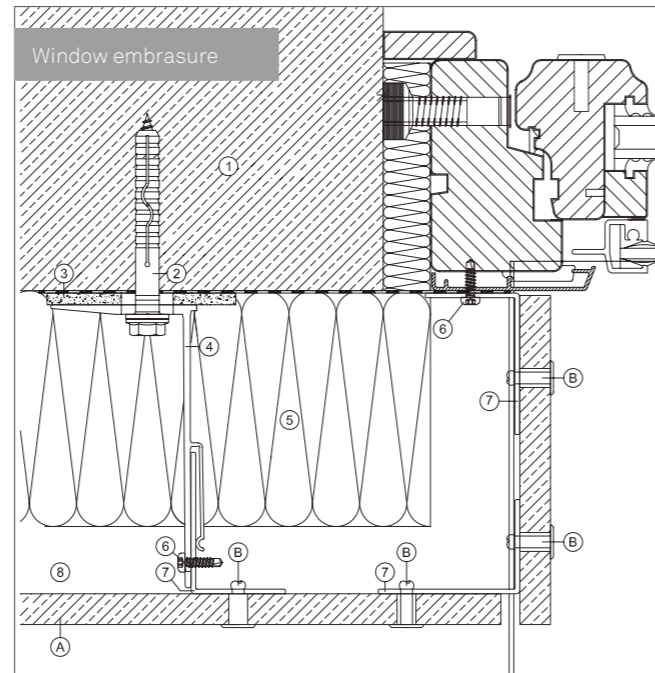
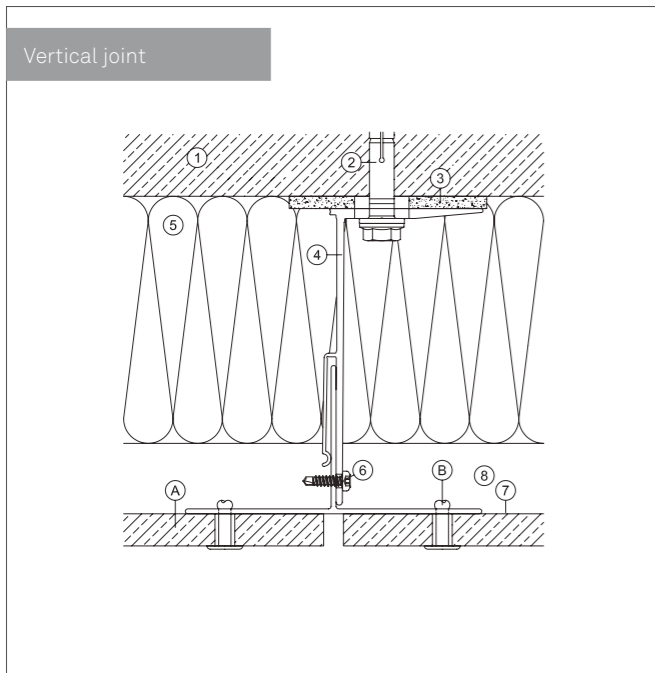
- Floating point
- Fixed point



Note

All the visualisations in the brochure are schematic representations of the system and structural-physical requirements and project details are not included in the data. The services provided by Rieder Smart Elements GmbH do not include

static calculations. The sample calculation listed here does not dispense with an individual test by a structural designer. Rieder does not accept any liability for statics.



Legend

- A) fibreC cladding panel
- B) Rivet

- 1) Masonry
- 2) Fastening dowel
- 3) Thermal Separator
- 4) Wall bracket
- 5) Insulation
- 6) Bracket screw
- 7) Vertical profile
- 8) Ventilation space

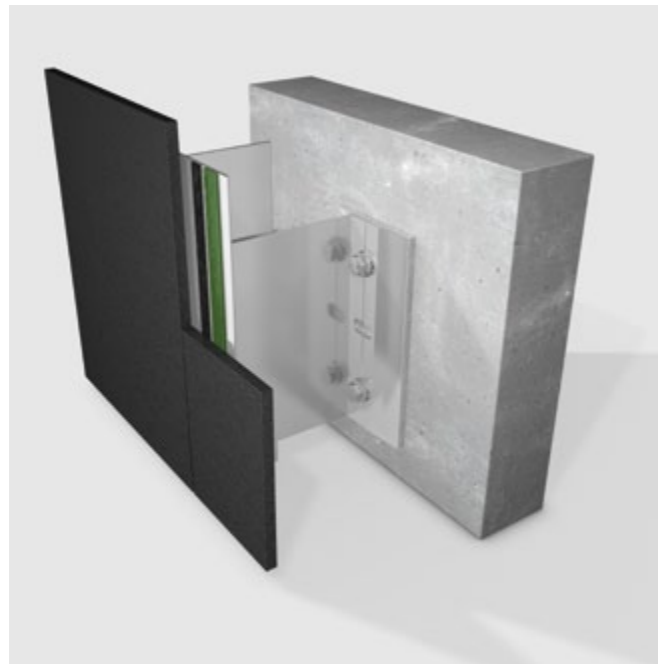


Storefront for Art and Architecture NYC | United States
 Architects: Steven Holl / Vito Acconci
 fibreC 13 mm | silvergrey | MA

Invisible Fastening with Adhesive

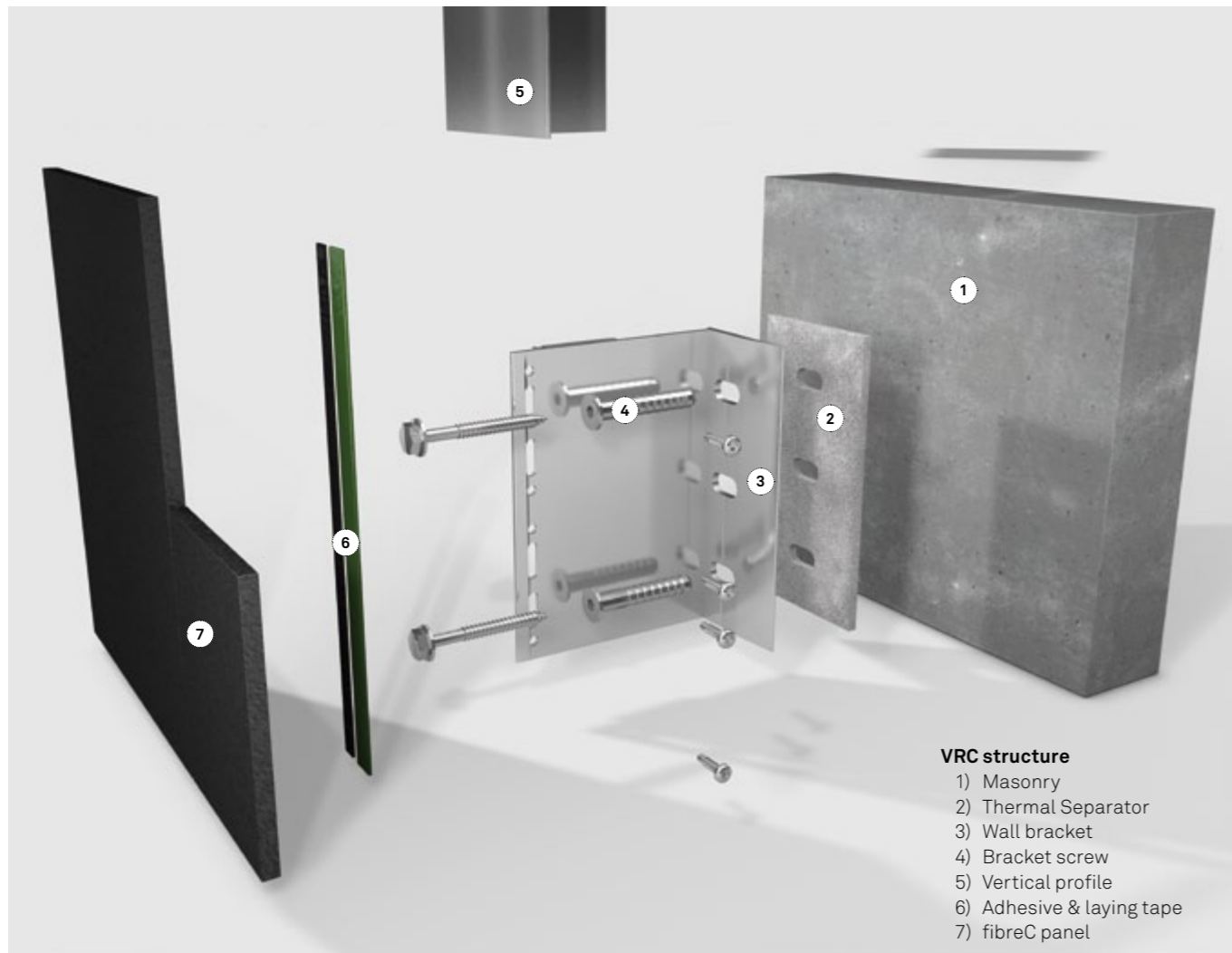
The panels can be fastened invisibly on a metal substructure using adhesive. The quality of the adhesive connection depends on the external conditions. Moist, cold or dusty surroundings can have a

negative effect on the adhesion. All the recommendations from the adhesive manufacturer must be followed to ensure the best adhesion.



Adhesive fastening

Download



VRC structure

- 1) Masonry
- 2) Thermal Separator
- 3) Wall bracket
- 4) Bracket screw
- 5) Vertical profile
- 6) Adhesive & laying tape
- 7) fibreC panel

Planning Details

Substructure

Exclusively metal substructure.

Fastening

The 'Sika Tack Panel' system manufactured by Sika with the licence Z-10.8-408 or equivalent must be used as an adhesive bonding mount. As a general rule, the manufacturer's processing guidelines must be observed. Only certified firms may perform adhesive work on the Sika Tack Panel system.

The weather-related principles must be complied with during the works:

- Processing temperature: 5°C – 35°C
- Maximum air humidity 75%
- The temperature of the subconstruction must be at least 3°C above the dew point temperature.

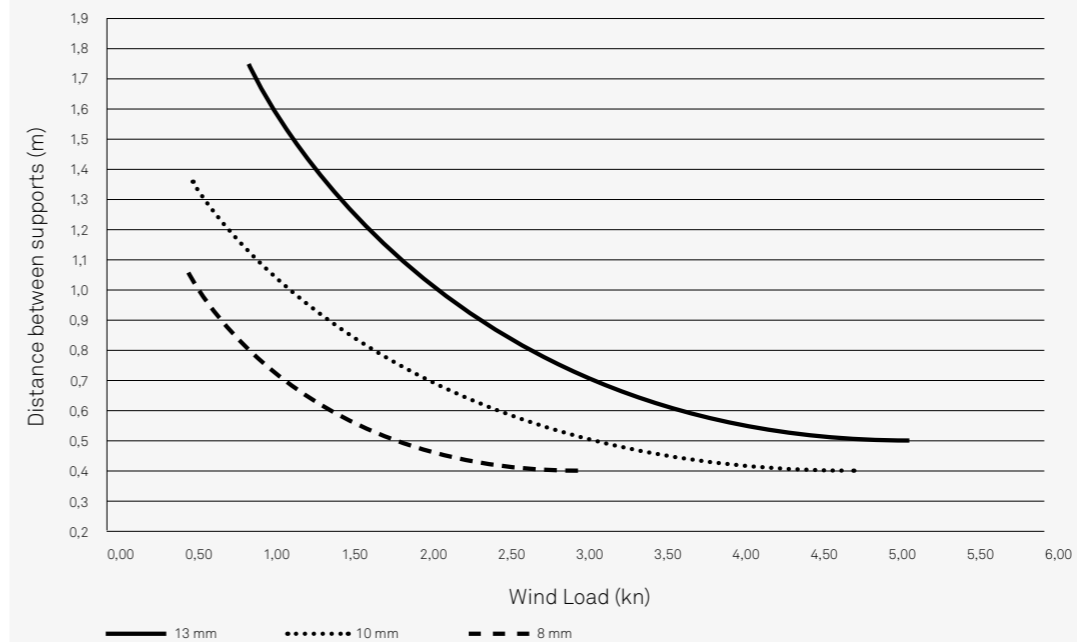
Preparations / processing

- The bonding must be vertical.
- The subconstruction and the reverse of the plate must be ground.
- The subconstruction must be cleaned with a special cleaner (205) appertaining to the system. Drawing-out time 10 minutes
- The reverse of the plate must be dusted and must not be cleaned with the cleaner (205) in any circumstances.
- The subconstruction and the reverse of the panel must be primed. Drawing-out time 30 minutes
- Caution – the panels may not be stored vertically during the drawing-out time.
- After the preliminary work, bonding can be performed in accordance with the processing guidelines of the adhesive manufacturer.

Joint

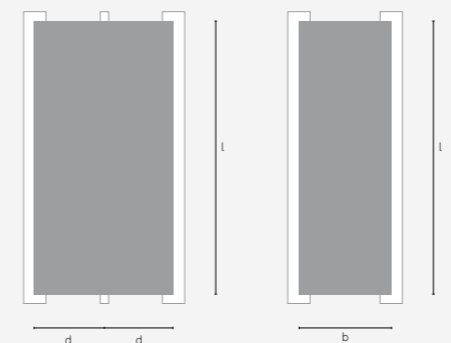
Joint width at least 8 mm.

Mount and edge distances



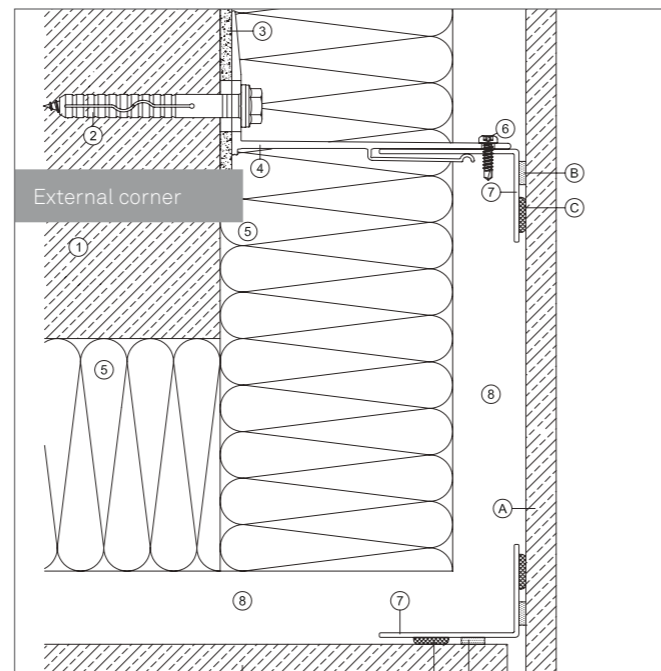
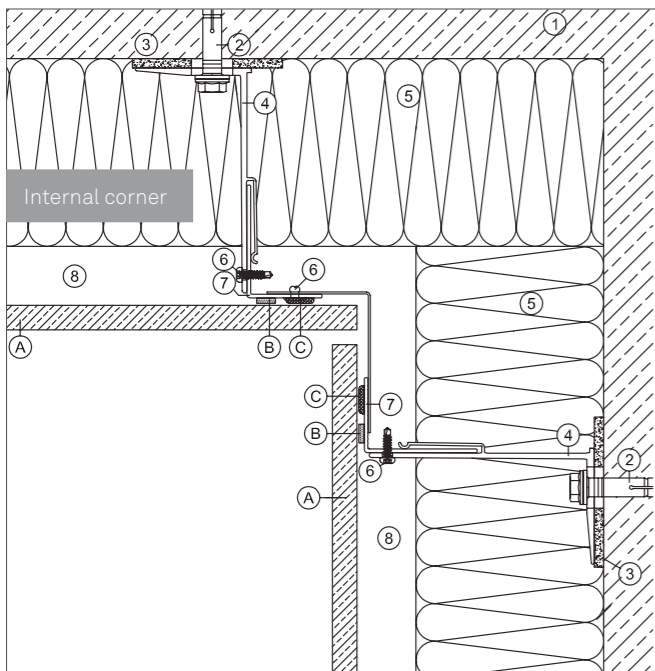
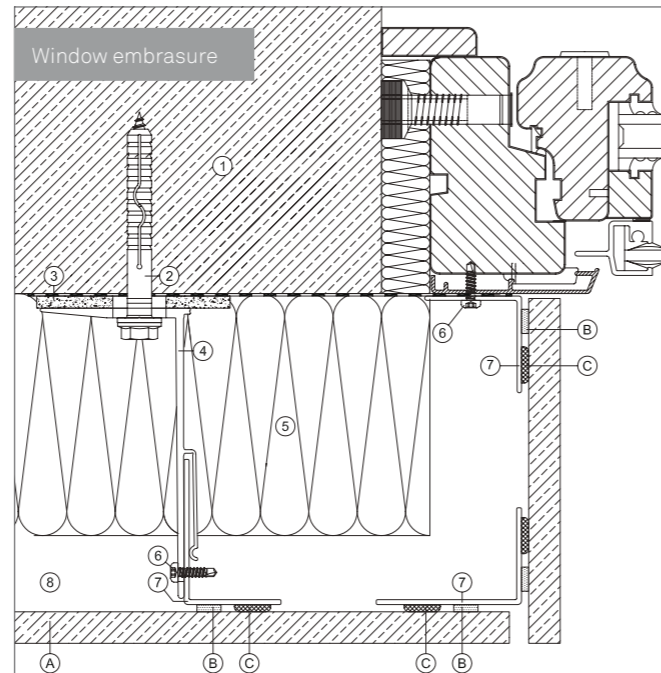
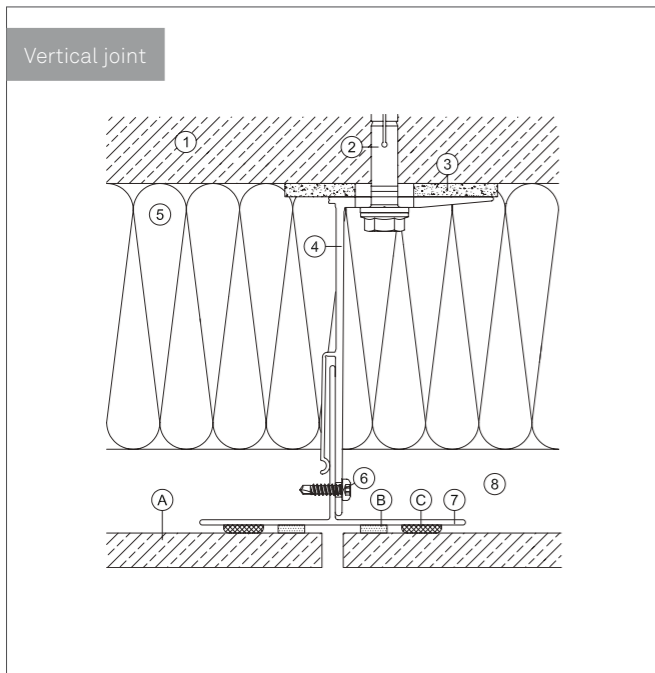
The maximum installation height is 22 m. In principle, the relevant country guidelines must be observed.

Multiple field plate Single field plate



Mount and edge distances

- d horizontal mount distance
- b Maximum plate breadth 1200 mm
- l Maximum plate length 3600 mm



Legend

- A) fibreC cladding panel
- B) Laying tape
- C) Cladding adhesive

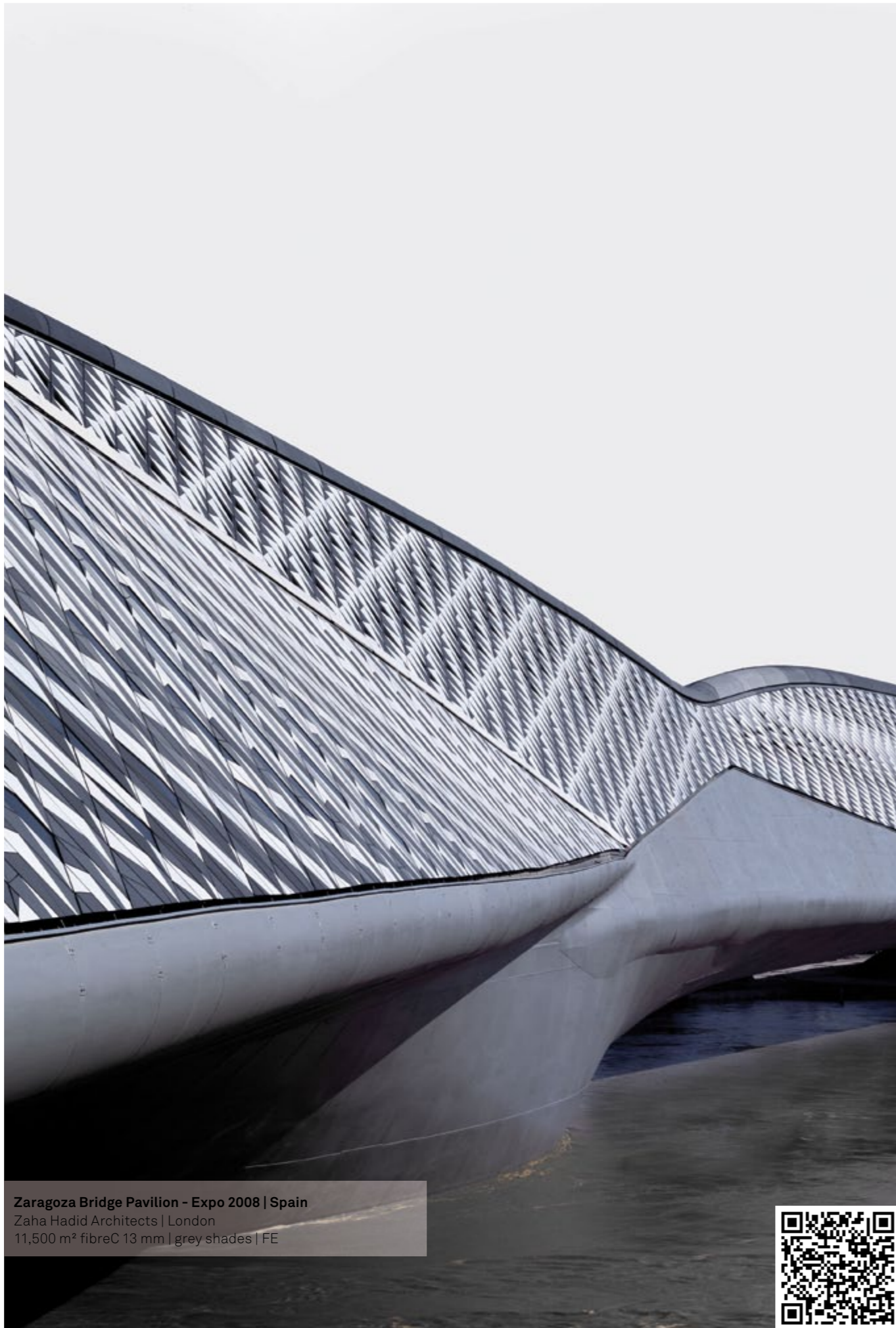
- 1) Masonry
- 2) Fastening Dowel
- 3) Thermal Separator
- 4) Wall bracket
- 5) Insulation
- 6) Fastening screw
- 7) Vertical profile
- 8) Ventilation space

Note
All the visualisations in the brochure are schematic representations of the system and structural-physical requirements and project details are not included in the data.



Miramar College San Diego | United States
Architect: Carrier Johnson
900 m² fibreC 13 mm | terracotta | MA





Zaragoza Bridge Pavilion - Expo 2008 | Spain
Zaha Hadid Architects | London
11,500 m² fibreC 13 mm | grey shades | FE

Processing

Cutting.....58
Drilling.....59
Rivets.....59

Processing

Processing on site

As a rule, the panels are already cut and delivered drilled to the site. If further processing is done on the building site, the following guidelines must be observed. Of course the team at Rieder is always

available if you have any questions. We can also arrange seminars for training on all assembly and handling guidelines. More information on this is available on page 74.

Download

Processing



Cutting

Cutting stationary – Wet cut

fibreC panels can be tailor-cut using a water jet. This is particularly suitable for complex cuts like curves and diagonal cuts. After the wet cut process, cleaning with clean water and subsequent drying are important. The panels must not be processed or piled under any circumstances when wet. Handling the panels improperly in the wet condition may lead to a loss of quality.

Cutting stationary – Dry cut

The fibreC panels can be cut with a circular saw bench and a diamond saw blade (e.g. Tyrolit or similar).

Cutting on the building site – Dry cut

Precise fitting cuts on site can be made with a circular hand saw with a guide rail (e.g. Festool plunge cut saw TS 55 EBQ-Plus-FS or similar). This saw facilitates cut-outs, diagonal cuts and mitre cuts.

Important:

Dust from drilling and cutting must be removed quickly and thoroughly, before it damages or dirties the surface of the panels.



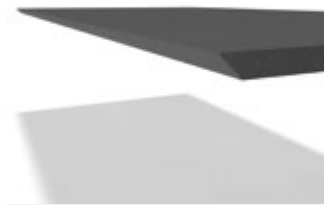
Diamond circular saw blade



Circular saw bench



Cutting with guide rail



Nice edge cut with guide rail



Diamond saw blade for jig saw



Jig saw for cut-outs



Torn edge cut without guide rail

Drilling

Through borehole

Through boreholes are generally drilled with a diameter of 8 mm. For the bore, we recommend the drill from the Company Bosch „BlueGranite“ Ø 8 mm, l = 120 mm or similar. When drilling, you must ensure that the visible face of the panels is facing upwards. In through boreholes, a block of e.g. wood must be placed underneath to avoid the bottom ripping.

Undercut anchor bore

As per approval, undercut anchor bores must be done with the system of the Keil Company. An undercut anchor with the setting

depth 8.5 mm must be used. Undercut anchor drill machines may be purchased or hired from the Keil Company (www.keilwerkzeuge.com). Training by Keil is recommended. Guidelines for drilling must be observed.

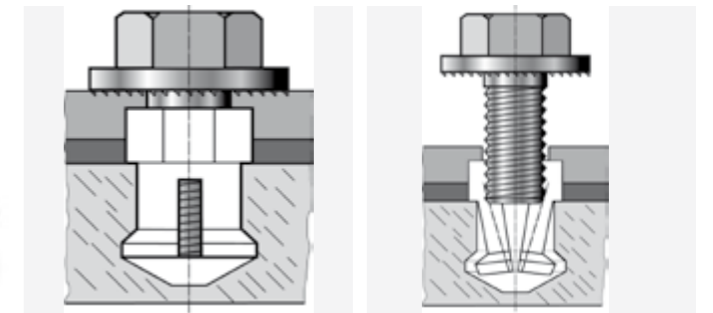
Important:

Dust from drilling and cutting must be removed quickly and thoroughly, before it damages or dirties the surface of the panels.



Blue Granit drill Ø 8 mm

Drilling jig



Undercut anchor bore

Undercut anchor bore

Rivets

Bores

Holes in the substructure must be drilled using a centre sleeve to ensure the bore hole is centrally aligned. The bore diameter for the substructure is 5.1 mm. Two sleeves must be used per panel and they must usually be arranged in the centre point of the panel. The sleeves fix the panels; they are described as a fixed point.

Rivet template

The rivets must be tightened using a rivet template matching the rivets. The rivet template has a load-distributing effect and creates a small clearance between rivet head and cladding board, with the result that movements in the cladding board can be absorbed.

Important:

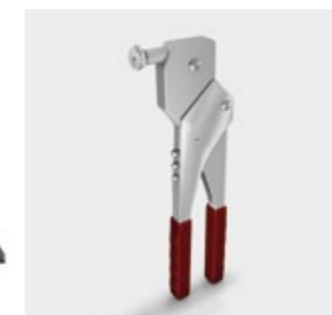
Dust from drilling and cutting must be removed quickly and thoroughly, before it damages or dirties the surface of the panels.



Rivet gun with rivet template



Rivet template



Manual rivet gun with rivet template



Rivet with sleeve



P.A.N. University Warsaw | Poland
JEMS Architects | Warsaw
2,000 m² fibreC 13 mm | silvergrey | FE



Quotation and Order	
From Enquiry to Delivery.....	62

Quotation and Order

Quality management for order processes

The Rieder group not only places great value on sustainability and the quality of their products, but also the satisfaction of their customers. Processors are just as important a link here in the network as architects, engineers and developers. To provide the right product for each individual project, all general conditions should be clarified beforehand.

Clarity of order

Accurate documentation on agreements facilitates the smooth running of projects. Clarity of order exists as soon as all project-related measurements, informations and payments are provided.

The characteristics of fibreC described in the brochure help to avoid misunderstandings or false customer expectations. The fibreC Handling Instructions provide guidance on how to handle the high-quality glassfibre reinforced concrete panels during transport, storage and cleaning.

Planning a fibreC cladding for a building?

Contact us for a non-committal appointment and a quotation. You can find a checklist for getting a quote in the download centre on our website. We can also send you the form by fax or e-mail.

Contact: office@rieder.cc or +49 / (0)8031 / 90167-163

Step 1 | Checklist quotation

We need the following information to give you a quote:

- Project name, project address
- Name of the architect or the architect's office
- Product type fibreC panel (Exterior, Interior, Special, Öko Skin)
- Application (e.g. cladding, internal wall, floor etc.)
- Type of build (new build, renovation)
- Type of project (public building, office block, school, private house etc.)
- Total m² fibreC panels
- m² per cladding side (optional)
- Colour(s)
- Surface(s)
- Planned type of fastening (rivets, adhesive, undercut)
- Planned awarding of contract
- Invoice address
- Delivery address
- Desired delivery date

Step 2 | Price suggestion / Quotation

After you have provided all the data above, you will receive a quotation and an expected delivery date from us.

Step 3 | Placing of order

After the order is placed, you will receive an exact delivery date. You will also receive the information as to by when we need the detailed data for the production of your panels.

Step 4 | Primary production

To meet the delivery time given, the raw panels are produced before all cuts and special processing are announced and they harden for 28 days.

Step 5 | Announcement of sizes & cutting measures

6 weeks before dispatch we need the project-related measurements.

All measurements and details must be with us by the above mentioned deadline.

- Cutting measures (dimensions between centre lines) in the form of an Excel table (Rieder order template)
- Special processing (bores, bore dimensions, diagonal cuts, mitre cuts etc.)

Note: If, despite the binding confirmation of the deadline for the submission for the cutting measurements and other data, you cannot meet the deadline, you will of course understand that the production schedule and thus the delivery time will be extended. This may lead to longer-term delays, because the entire production process is pre-planned over several weeks. Failure to comply with the deadline may lead to processing costs for the resulting rescheduling of productions being charged.

Step 6 | Updated order confirmation

After notification of all cutting measurements and special processing, you will receive an updated order confirmation with final measurements.

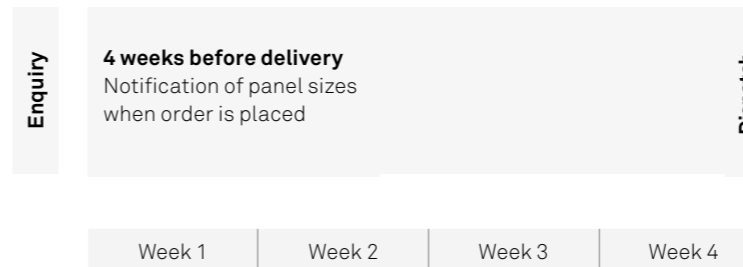
Step 7 | Final production and packaging

Step 8 | Delivery (Incoterms 2010 FCA)

We organise the delivery on the day of the provision of your panels. You get the information when the panels are going to be delivered. By request you can also organise the transport yourself. We provide you with all the data needed. If the goods can not be collected within two weeks, storage costs may be charged.

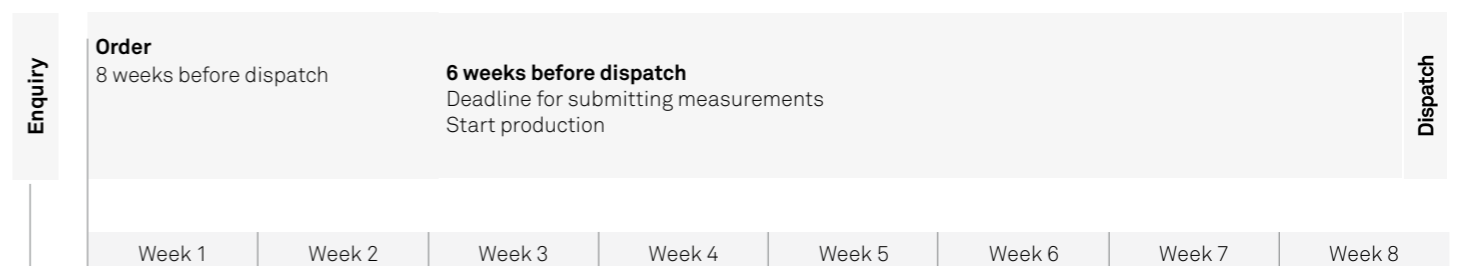
Amount ordered < 80 m²: raw panels in stock / individual final production & packaging

4 weeks delivery time



Amount ordered > 80 m²: =order production (from 500 m² delivery time on request)

8 weeks delivery time



Checklist quotation
Download-Center www.rieder.cc or
office@rieder.cc
+49 / (0)8031 / 90167-163

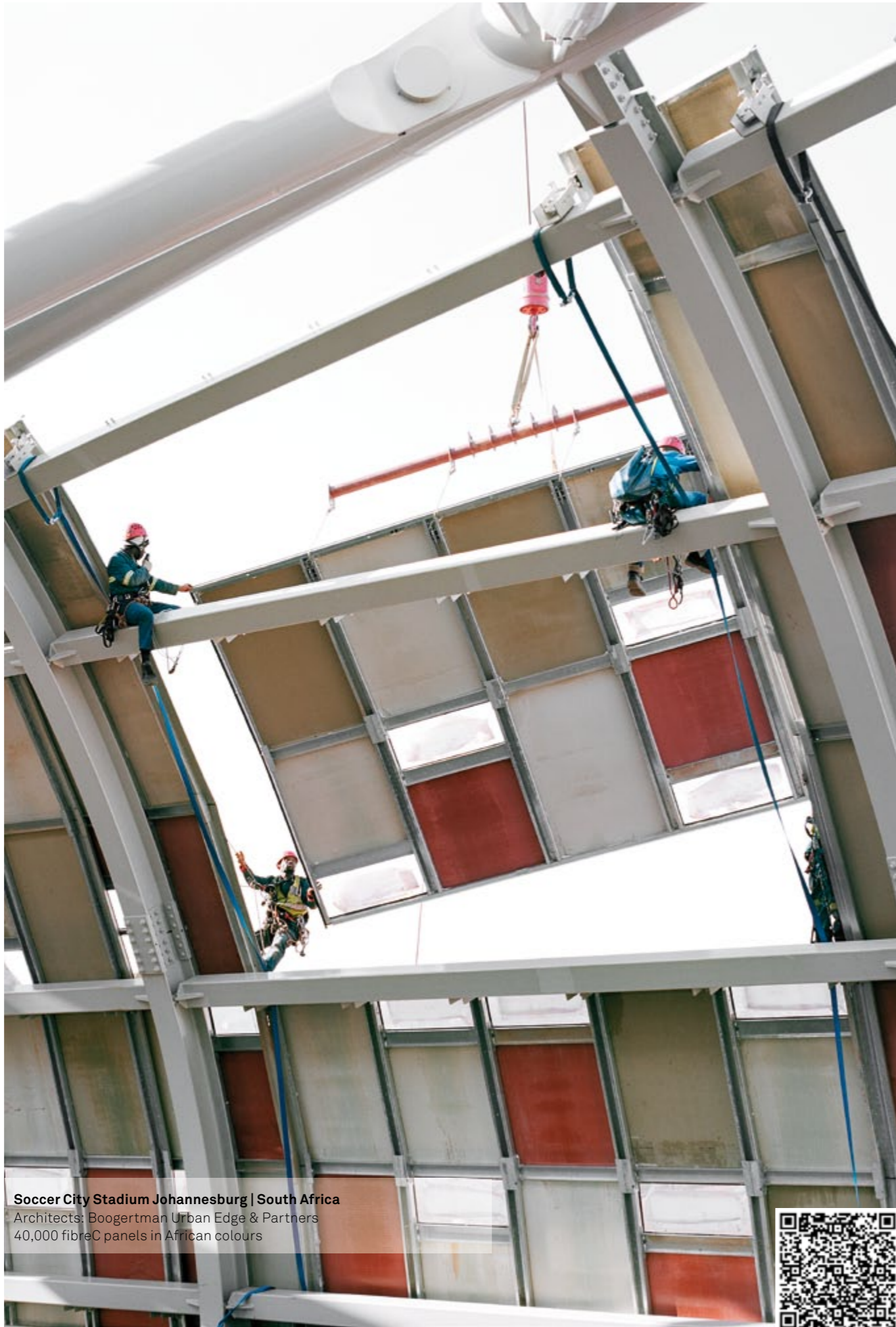
Checklist quotation



Excel-list order template
Download-Center www.rieder.cc or
office@rieder.cc
+49 / (0)8031 / 90167-163

Order template





Soccer City Stadium Johannesburg | South Africa
 Architects: Boogertman Urban Edge & Partners
 40,000 fibreC panels in African colours

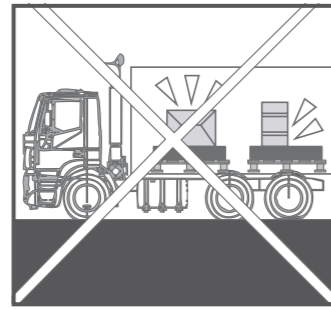
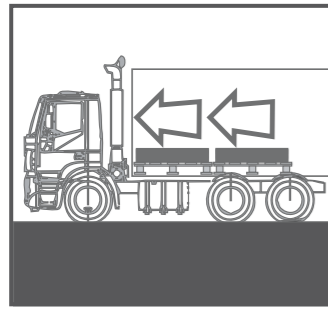


Handling & Service

Loading and Securing for Transport.....	66
Storage.....	66
Proper Handling.....	67
Cleaning.....	68
Repair Kit	69
Customer Service.....	70
Contact Details.....	74

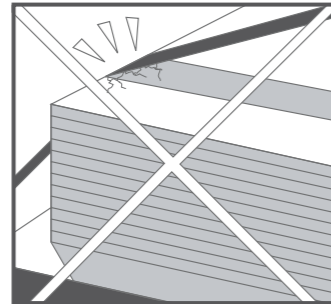
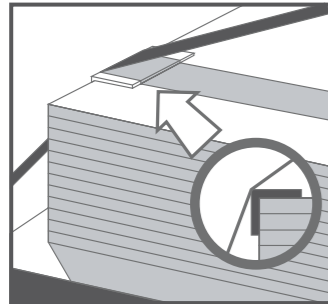


Loading and Unloading



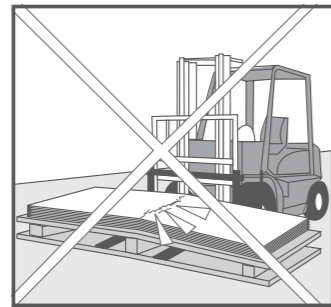
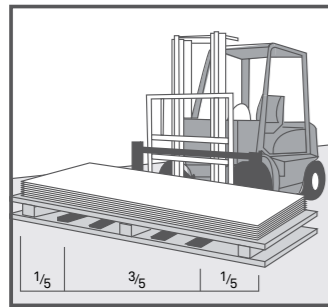
Loading

Form-fit, safe loading. A maximum of 2 pallets may be stacked on top of each other. Do not place larger pallets on smaller pallets. Do not stack any other goods on the pallets. For container transport see Datasheet Container.



Edge protection

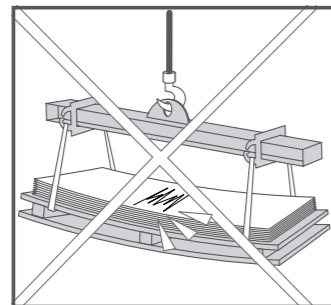
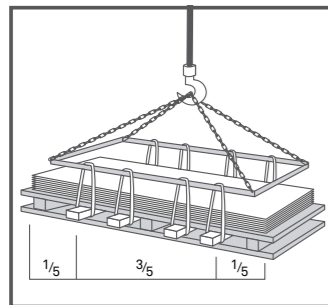
Transport safety is guaranteed only with stable edge protection. Number of lashing straps in compliance with legal regulations. Load safety must be guaranteed.



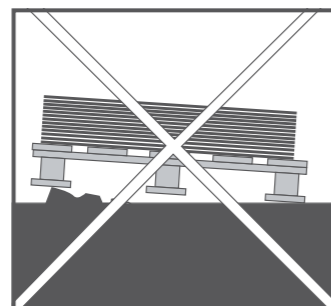
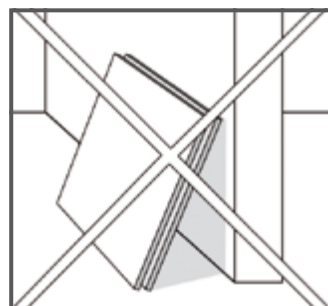
Proper unloading

Unloading and transport exclusively with forklift/truck or crane. Pallet bending causes cracks or even break of panels. Avoid vibration during manipulation of the pallets. Ensure to load bearing capacity distances.

Lift single pallets - do not stack or rest on the edge of the lower pallet. The weight per pallet is usually between 1.5 to max. 2.0 tons. Drive slowly!



Storage

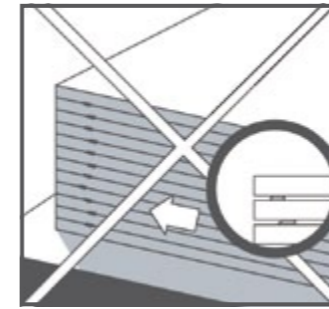
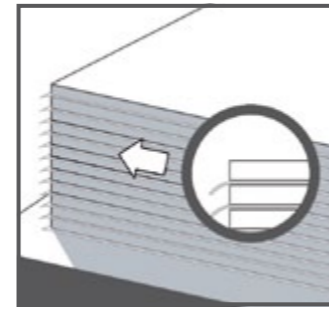


Storage area

At planning stage we recommend - especially for large projects - to provide a suitable storage space (dry and flat) for the fibreC boards, e.g. underground parking, hall etc. When placing material on the ground, make sure it is level! Pallets must not be stacked one above the other at the site.

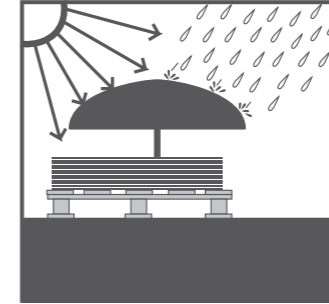
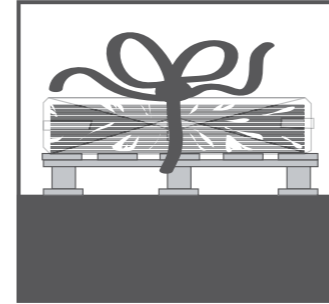
No leaning

Avoid sagging/bending and swinging. Do not store panels on corners or edges without appropriate protection (such as Styrofoam or Styrodur).



Protection when stacking panels on top of each other

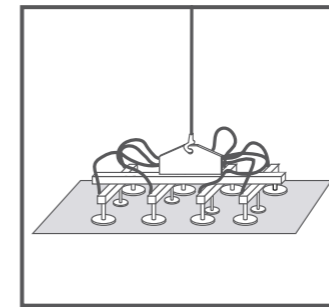
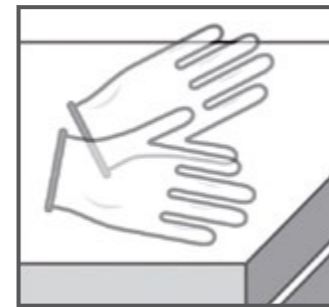
Do not stack on top of each other without adequate protection between the individual panels. No glassfibre reinforced concrete elements or pieces of wood must be stuck between the fibreC panels. To achieve sufficient protection against damage from the panels rubbing together, a foam foil should be placed between each panel.



Protection against the elements

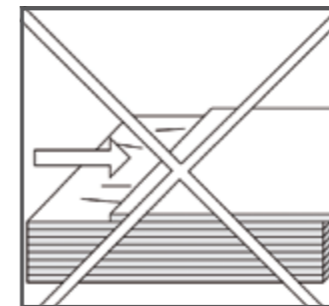
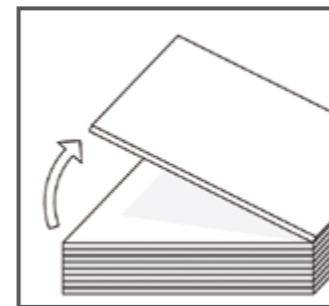
The fibreC panels must be safely secured and well protected until just prior to installation. The panels may only be removed from the packaging immediately before assembly. Any pallets already open must be closed again and appropriate protection from moisture must be guaranteed. The fibreC packaging film is no sufficient protection against any weather conditions.

Proper and safe handling



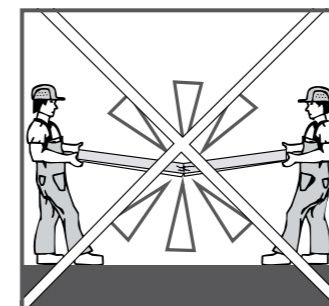
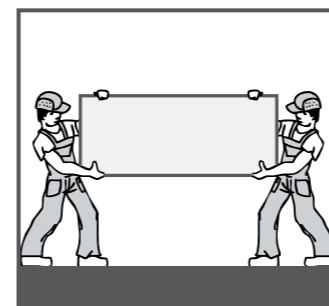
Technical resources

Appropriate technology for unloading, reloading, the transport and assembly are necessary. Use clean protective gloves!



Carefully twist panels - do not pull

Do not push or pull panels from the stack. Always twist. Panels must not rub against each other.



Proper carrying / handling of the panels

Manual transport with upright panel! Use protective gloves, wear industrial safety equipment. Caution heavy weight. Risk of injury! Avoid swinging and bending of the panel, causes cracks or even breakage. Handle narrow, long boards with special care! Do not place boards on edges or corners without appropriate protection (such as Styrofoam or Styrodur).

Cleaning

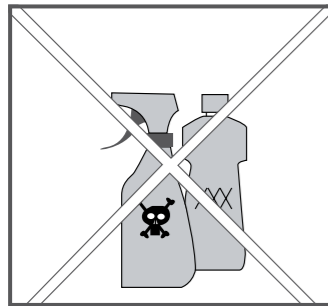
Cleaning of the panels before assembly

Position the panels inclined for cleaning. Clean under running water with a scratch-free brush or micro-fibre cloth. After drying follow storage guidelines. There must not be any ponding water left on the panel.

Cleaning interval after installation

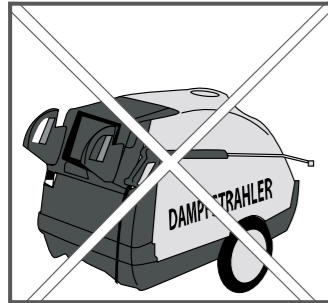
Depending on the location of the work and stress on the cladding from dirt, we recommend cleaning the cladding at an interval of about 2 - 5 years by a specialist company. The recommended cleaning intervals are approximate and a guide. Every cladding should be examined before cleaning, to decide on the need for cleaning.

Cleaning systems



No chemicals

Do not use chemicals (except fibreC cleaner).



No high-pressure cleaners

Do not use steam jets or high-pressure cleaners. Water jet with too high pressure leaves marks on the cladding.

For normal soiling, we recommend the cleaning system MC-Duroprob N from the Company MC – Bauchemie www.mc-bauchemie.de or equivalent. For heavy soiling, the cleaning system MC-Duroprob B from the Company Firma MC – Bauchemie can be used.

Caution: Due to heavy dissolving activity, incorrect use can damage the hydrophobising. In principle, the processing instructions of the company, MC–Bauchemie for the processing of the cleaning systems must be observed. After the installation is complete, we recommend a thorough cleaning of the cladding with the cleaning system MC-Duroprob N.

Important:

Dust from drilling and cutting must be removed quickly and thoroughly, before it damages or dirties the surface of the panels.

fibreC shall not be liable for any improper cleaning or maintenance.

Repair Kit

For smaller incidences of damage to the fibreC panel, such as broken-off areas at the edge, cases where material has split, or other flaws up to a size of 1 cm², we recommend the fibreC repair kit. The necessary steps for correcting the flaw in the best possible way are as follows:

Step 1 | Filler

The first step consists of filling in the damaged area. We recommend the following producers or systems for filler:

- ARDEX FIX Filling Paste
- ARDEX FEATHER FINISH
- BOTACEM M37

All three of the fillers indicated are suitable for repairing the fibreC panels. The materials can be ordered from the respective manufacturer or at your building materials stockist. We draw your attention to the processing guidelines issued by the manufacturers; Rieder Faserbeton-Elemente GmbH is not liable for any guarantee claims in the case of improper use.

Step 2 | Coloured Water-Repellent Agent

After repairing the flaw by using the filler and after observing the required drying period, the coloured-in water-repellent agent must be applied using a suitable brush, to cover up the colour tone of the filler. Rieder Faserbeton-Elemente GmbH offers a suitable coloured-in water-repellent agent for each fibreC standard colour.

The different surface structures - FE Ferro, FL Ferro Light and MA Matt - can be produced with the help of various aids. The smooth panel surface MA Matt is produced by the simple application of the water-repellent agent, using a brush, or a roller made of foam rubber. After it has been applied, the water-repellent agent must be lightly dabbed using a sponge, to produce the structure of the FE Ferro und FL Ferro Light surfaces.

Sources of supply for filler

ARDEX GmbH, Friedrich-Ebert-Straße 45, 58453 Witten, Germany, kundendienst@ardex.de, www.ardex.de
 BOTAMENT Systembaustoffe GmbH & Co. KG, Am Kruppwald 1, 46238 Bottrop, Germany, info@botament.de, www.botament.de

Sources of supply for water-repellent agent

Rieder Faserbeton-Elemente GmbH, Bergstr. 3a, 83059 Kolbermoor, Germany, office@rieder.cc, www.rieder.cc

During the application the following points must be borne in mind:

- The area to be treated must be clean, dry and free of dust.
- Separating agents, formwork oils or other fluids can lead to adhesion problems.
- Before and during the processing, the water-repellent agent needs to be stirred around very frequently, in order to prevent the components from forming a sediment.
- The panel temperature and the surrounding temperature must be at least 10° C.
- The task of applying the water-repellent agent should be completed in one operation; if it is applied in two or more operations, it can lead to a shiny effect on the water-repellent agent.
- The amount needed per m² equals ca. 130 g, the required density equals ca. 1.1 kg/l.
- The tools used should be cleaned with warm water immediately after use.
- The filled-in water-repellent agent keeps for 6 months.
- The filled-in water-repellent agent should be kept in a cool and dry place, protected from frost.

Customer and Processor Service

The satisfaction of our customers is our primary goal. This is why regular quality checks, both in production and in all internal processes within the Rieder group are standard.

Support for processors

Our service philosophy of supporting planners, processors and builders at all times ranges over all project phases. It starts even before an order is placed and does not end with the delivery of our products.

Our team is available to advise our partners at any time and we offer processors individually designed training courses. Our documentation and valuable tips help enhance the processing and assembly of fibreC cladding panels.

As a special service we offer our partners on-site support. On request, we can provide new partners or processors working on a particularly challenging project, a fibreC assembly team. Our experts will train your staff at the construction site or support the processor team with any problems.

Are you interested in a fibreC training, tailored to your team or do you need assistance in the implementation of a current project? Please contact the fibreC administrative services and arrange an appointment with our technical support. We are looking forward to assist you!

Contact: +49 / (0)8031 / 90167-0 or office@rieder.cc

fibreC customer service

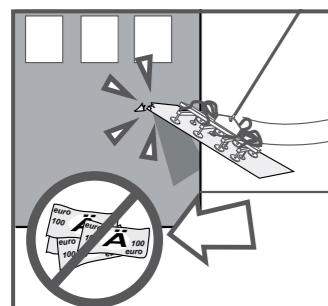
We always try to meet the expectations of our partners and customers. However, if you are still not fully satisfied with a service or a product, we would be grateful if you would let us know. This is the only way we can improve and leave you 100% satisfied the next time.

To do this, please contact your sales staff at fibreC.

Please do not hesitate to contact us immediately! We will do our best to respond as quickly as possible. To resolve your query as promptly and as precisely as possible, we need the following basic data from you.

- Property name, property number, property address
- Invoice number
- m², panel colour, panel size, coating
- Fastening
- Processor
- Your contact data and position in relation to the project (company, telephone number, e-mail)
- Date of delivery

Many thanks!



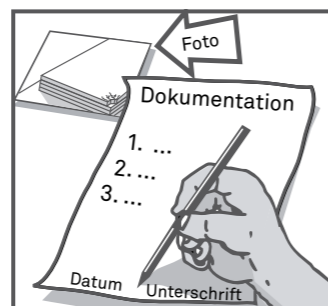
Proper handling

Briefing of all involved parties before processing starts. Processing guidelines of the manufacturers of the substructures or fastening agents must be followed!



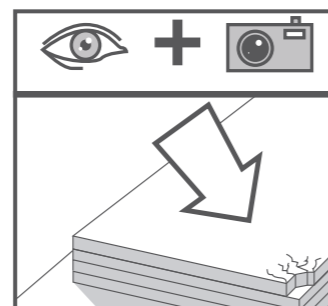
Keep documents

Keep packaging documents: Handling guidelines, pack list, pallet marking.



Goods inward check

Transport damage must be marked on the transport documents and signed by the driver.



Document defects

Defects on the panels should be documented with photos and a report and reported immediately in writing (claim). Secure faulty goods. Do not install!



Öko Skin | the practical alternative to wood shuttering

| Size: 1800 x 147 x 13 mm

| Easy to install & to replace

| No maintenance: **no more painting!**

| Eco-friendly material made of glassfibre reinforced concrete

| Numerous design options: 10 colours | sandblasted surface



[öko skin]
BY RIEDER



Buddhist Centre Vienna | Austria
Moser Architects | Vienna
800 m² fibreC 13 mm | sandstone & silvergrey | FE

Contact Rieder Group

Sales

Rieder Smart Elements GmbH
Mühlenweg 22
5751 Maishofen
Austria

T: +43 / (0)6542 / 690 844
F: +43 / (0)6542 / 690 855
E-mail: office@rieder.cc

Production

Rieder Faserbeton-Elemente GmbH
Bergstr. 3a
83059 Kolbermoor
Germany

T: +49 / (0)8031 / 90167-0
F: +49 / (0)8031 / 90167-169
E-mail: office@rieder.cc

You can find the contact details of your local sales person and our international partner network under www.rieder.cc.



Contact
Rieder Team

Note

This brochure contains basic descriptions and information on fibreC glassfibre reinforced concrete panels.

The descriptions of the product characteristics should not be considered a guarantee. All information, including technical information and drawings, is up to date and based on our own experience. The service provided by Rieder Smart Elements GmbH extends to fibreC panels but explicitly not to fastening materials or substructures. The applications described here are examples only and do not take account of the specific conditions associated with individual cases. The information and suitability of the material for the intended use must be checked with respect to each individual project. Despite careful checking, we cannot accept liability for accuracy, completeness or actuality. This applies, in particular, to print errors and subsequent changes to technical information. Reference to this will be made in the contract to the agreement to be concluded, which takes precedence over information provided here.

Please get in touch with your local fibreC sales partner or contact Rieder directly for more information on sales terms, availability, prices, etc. The latest version of these technical documents is available for download under www.rieder.cc.

Safeguarding external copyright

Rieder is committed to respecting all the copyrights of the graphics, photos and texts, to using our own graphics, photos and reverting to texts or to use graphics, photos and texts in the public domain. If there is an unmarked graphic, photo or text protected by external copyright, the copyright could not be determined by Rieder. In the case of such an unintentional copyright violation, Rieder will remove the item upon notification or indicate the appropriate copyright.

All information, logos, text, graphics and images are subject to copyright. They are, if no other reservations, property of Rieder Smart Elements GmbH. The processing and use in media is allowed only with prior written permission of Rieder.

Photos

Rasmus Norlander, Ditz Fejer, Mike Powley, Helene Binet, Herta Hurnaus, Daniel Lunghi, Adolf Bereuter, Alex Dobias, Scagliola Brakkee, Jo Pesendorfer

Visualisations

deep Blue Europe

Paper

Printed on FSC-certified paper.